

Chinley, Buxworth and Brownside Parish Statement (draft)



Source: thanks to Chinley, Buxworth and Brownside Parish Council

The parish of Chinley, Buxworth and Brownside is located at the western edge of the Dark Peak landscape area of the Peak District National Park. In terms of area, approximately half of the parish is within the National Park, although it is worth noting the majority of development and population of the parish are outside of the National Park boundary. Chinley and Buxworth are the main settlements which are located to the north of the A6 road, outside the National Park.

Historically, Chinley was an Anglo-Saxon settlement of scattered farmsteads. During the 17th century the local area was mined and quarried and consequently Chinley's population grew. These local industries developed further following the building of the Peak Forest Canal and tramway in 1799 and again when the railway came in 1866. The addition of a passenger line in 1894 saw further population growth. However, the closures of the mines and quarry in the early 20th century saw the population decline. It declined further following WWII when the passenger service was reduced, however in recent years there has been a significant amount of new housing development in proximity of the parish and the area has become a very popular commuting area. Further development is also anticipated soon. New businesses have opened recently in the food and beverage, accommodation and childcare sectors.

The area is a popular walking, cycling and horse-riding area with the Peak Forest Tramway Trail and Bugsworth Basin also popular attractions.

The parish straddles three landscape character areas within the Dark Peak; valley pastures with industry, enclosed gritstone upland and moorland hills and ridge as described in the Landscape Strategy (LSAP 2009).



Chinley, Buxworth and Brownside Parish Statement (draft)



Community aspirations

- A new community centre on the site of the existing one on Lower Lane, Chinley which is in a very poor condition
- Create closer ties between the two villages of Chinley and Buxworth
- A fully accessible station
- To resolve the parking issues that exist around Chinley
- To create a safer environment for pedestrians and cyclists, including the creation of safe walking and cycling routes for children attending local primary and secondary schools
- To support local businesses
- To continue to seek ways of involving more local residents in decisions about matters of local importance
- Future housing developments to be in line with the High Peak Local Plan (Adopted April 2016) and proportionate to the local infrastructure and environment

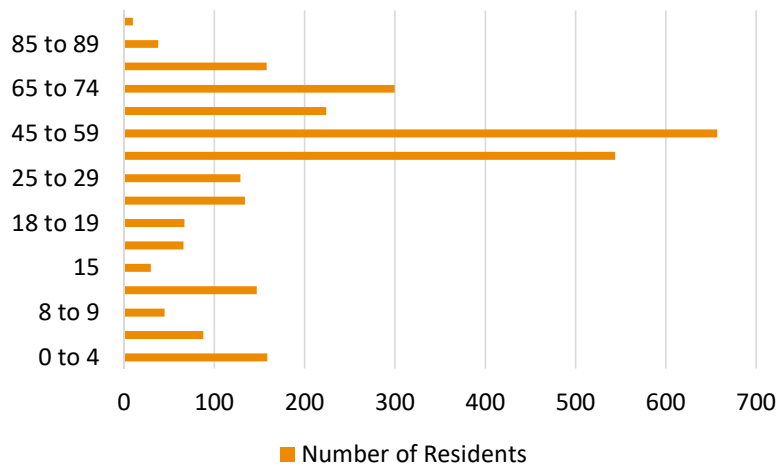


Chinley, Buxworth and Brownside Parish Statement (draft)

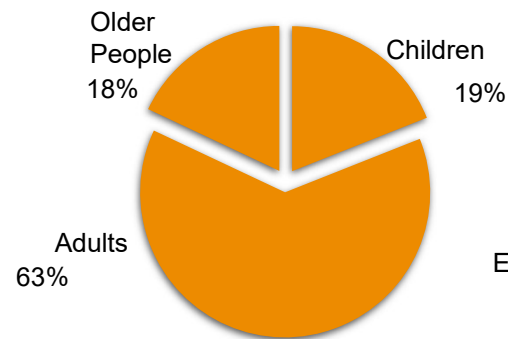


Population and Demographics

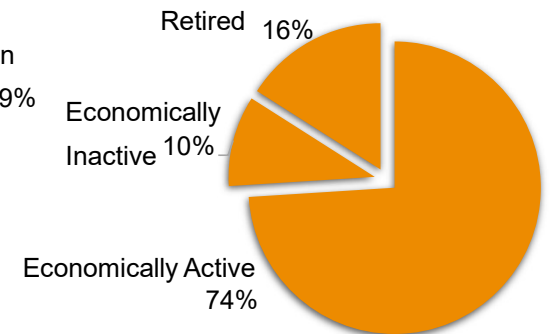
Population Age Range



Children, Adults and Older People



Working and Non Working Adult Population (18+ years)



KEY
 Children 0-17 years
 Adults 18-64 years
 Older People 65 years +

The parish of Chinley, Buxworth and Brownside has a population of 2,796 residents (2011 census).

Source: Census 2011

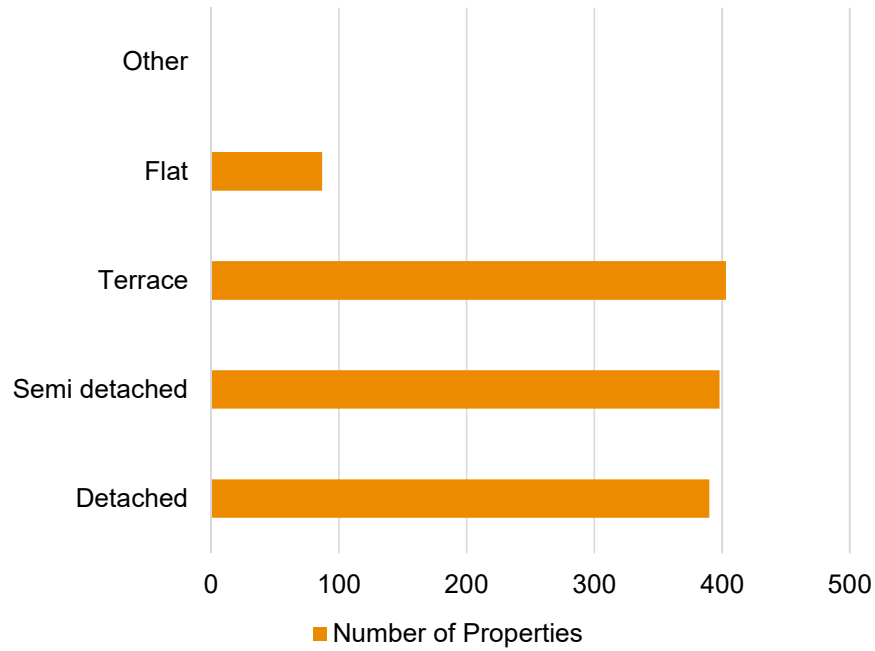


Chinley, Buxworth and Brownside Parish Statement (draft)

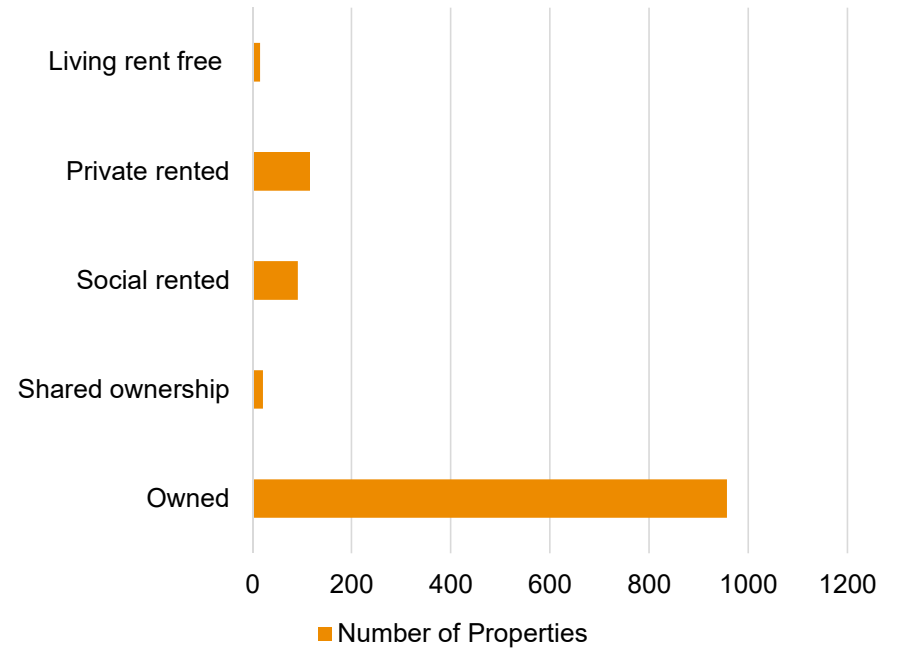


Housing

Housing Type



Housing Tenure



Source: Census 2011

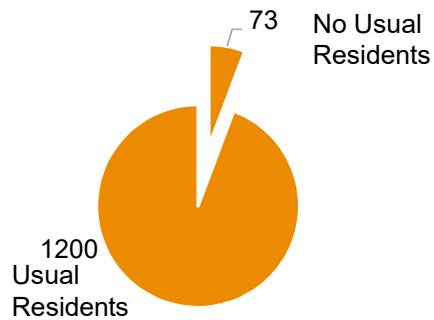


Chinley, Buxworth and Brownside Parish Statement (draft)



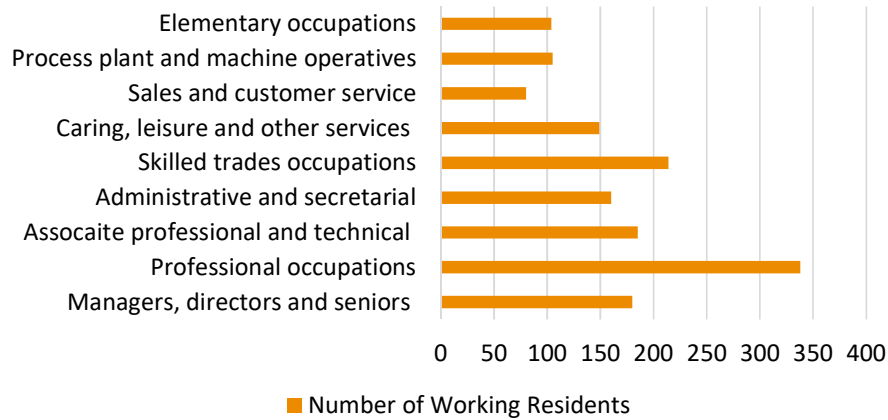
Residency

Occupancy of Properties



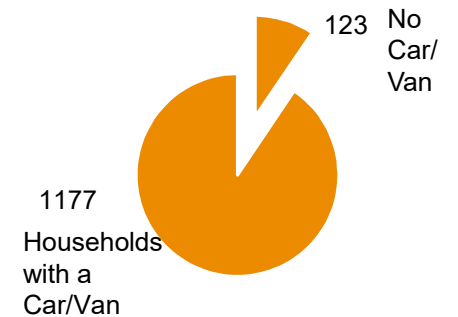
Employment

Occupations of Working Adults



Car/Van Ownership

Households with a Car/Van





Chinley, Buxworth and Brownside Parish Statement (draft)



Settlement Amenities

Chinley

Convenience Food Shop	★
Post Office	★
Primary School	★
Community Hall	★
Playground	★
Playing Field	★
Industrial Units	★
Distance to General Practice (miles) *	0
Within 1 Mile of an A or B Road	★
Good Public Transport Route (5+ services a day)	★
Public House	★
Post Box	★
Church	★
Mobile Library	★
Conservation Area	★
Website/Newspaper	★
Groups	★
Events/Traditions	★
Accommodation	★
Food outlet e.g. café, take-away	★

* The main GP surgery is at Thornbrook.

Buxworth

Convenience Food Shop	—
Post Office	—
Primary School	★
Community Hall	—
Playground	★
Playing Field	★
Industrial Units	★
Distance to General Practice (miles)	1
Within 1 Mile of an A or B Road	★
Good Public Transport Route (5+ services a day)	★
Public House	★
Post Box	★
Church	★
Mobile Library	—
Conservation Area	★
Website/Newspaper	★
Groups	★
Events/Traditions	★
Accommodation	★
Food outlet e.g. café, take-away	★

Key
 ★ Is present
 — Is not present

Source: Parish Council



Chinley, Buxworth and Brownside Parish Statement (draft)



Public Transport

Chinley is served by both buses and trains. The 190 bus route runs between Buxton and the Shallcross estate in Whaley Bridge. There are 6 buses in each direction daily Monday to Friday and 5 services on a Saturday. There are no buses on Sundays (see timetable at <https://www.highpeakbuses.com/bus-services/190/>).

Chinley railway station has regular stopping services to Manchester and Sheffield. There are also some direct services westwards, for example to Hazel Grove, Stockport, Warrington and Liverpool, and eastwards, for example to Chesterfield, Nottingham, Grantham, Peterborough and Norwich (see timetable at <https://www.northernrailway.co.uk/>)

There is no level access to the island platform at Chinley station which is reached by a footbridge with steep steps. Travellers unable to use the footbridge should contact Passenger Assist via https://www.nationalrail.co.uk/stations_destinations/disabled_passengers.aspx#howtobook for help and advice.

Source: Chinley, Buxworth & Brownside Parish Council, Sept 2020



Chinley, Buxworth and Brownside Parish Statement (draft)



Community

Clubs	Football, cricket, netball, table tennis, running, cycling Chinley & Buxworth Community Association, Allotment Associations in Chinley & Buxworth, Women's Institute, Brownies & Guides, 1st Chinley Scout Group, Friends of Chinley Park, Bugsworth Basin Heritage Trust, Chinley & Buxworth Transport Group, Chess Club, Bridge Club, Toddler Group, Local church groups, Craft Club, Musical Memories, monthly cinema, Book Swap & Drop, exercise classes, swimming and much more!
Events/Traditions	Well dressing in Buxworth Buxworth Olympics, Buxworth Steam Weekend Chinley Summer Fete, Chinley Christmas Market

Source: Parish Council

Planning

Over the last 5 years 15 planning applications have been approved within the national park area of the parish.

Digital Presence

<https://www.chinleybuxworthbrownside-pc.gov.uk/>

Affordable Housing

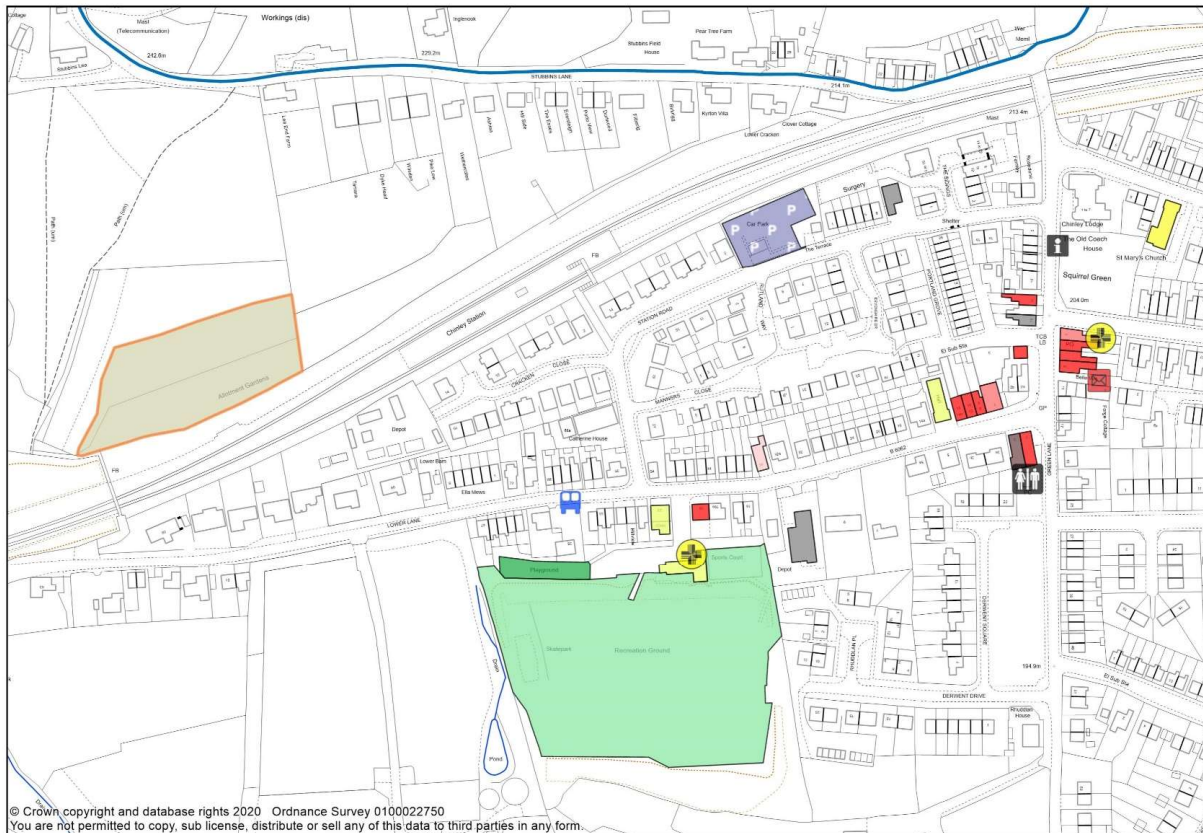
A development is currently under construction off Forge Road on the boundary of the parish. Alders Meadow, Chinley and the Britannia Mill site in Buxworth are areas yet to be developed. Please note that all of these sites are outside of the national park boundary yet lie within or on the edge of the parish boundary as a whole. Affordable housing should be available as part of these developments.



Chinley, Buxworth and Brownside Parish Statement (draft)



Chinley Services (1 of 3)



Key

- A1 Shops
- A2 Financial and Professional Services
- A3 Restaurants and Cafes
- A4 Drinking Establishments
- A5 Hot Food Takeaways
- B1 Business
- B2 General Industrial
- B8 Storage or Distribution
- C1 Hotels
- C2 Residential Institutions
- C2A Secure Residential Institution
- C3 Dwellinghouses
- C4 Houses in Multiple Occupation
- D1 Non-Residential Institutions
- D2 Assembly and Leisure
- Camp Site
- Allotments
- Playground
- Playing Field
- Public Car Park
- Sui Generis
- Bus Stop
- Notice Board
- Post Box
- Telephone Box
- Cash Point
- Public Toilets
- Defibrillator

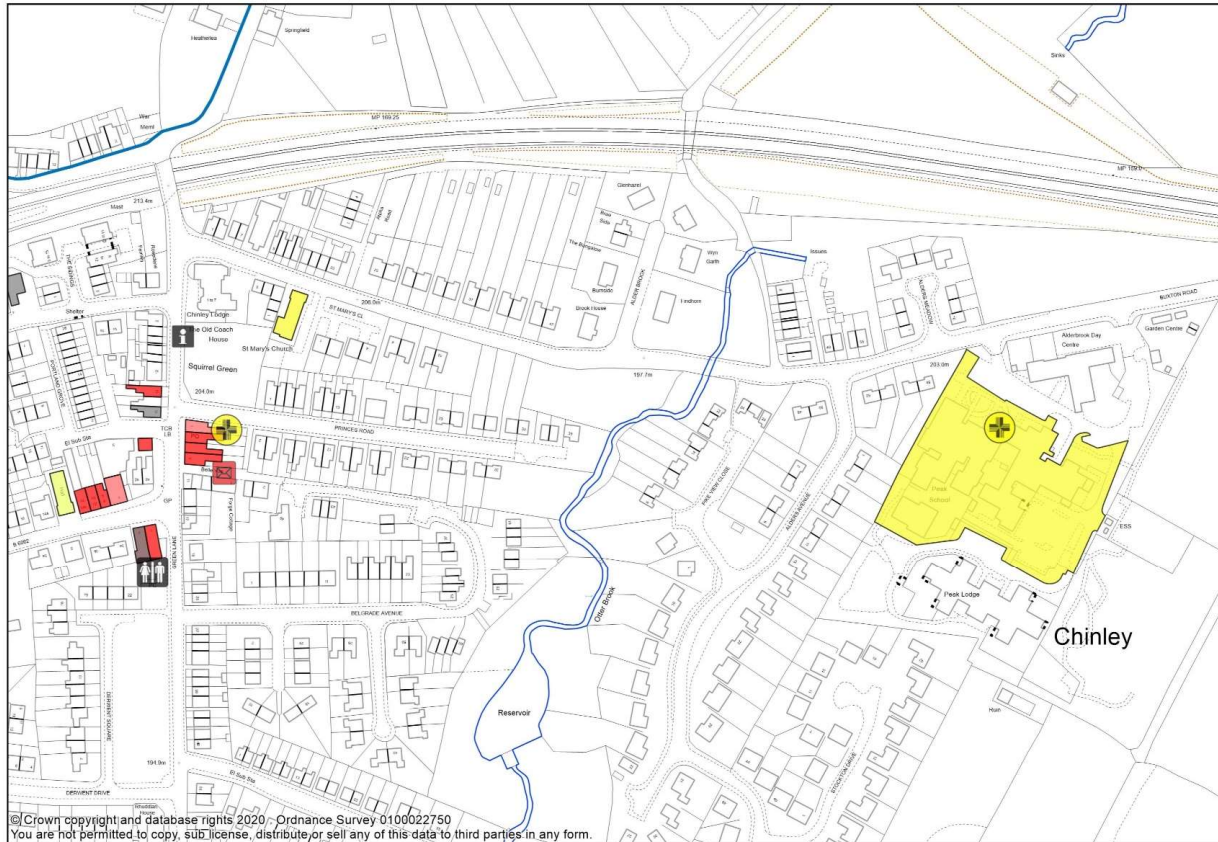


Views Over Chinley

Chinley, Buxworth and Brownside Parish Statement (draft)



Chinley Services (2 of 3)



© Crown copyright and database rights 2020. Ordnance Survey 0100022750
You are not permitted to copy, sub-license, distribute or sell any of this data to third parties in any form.

Key

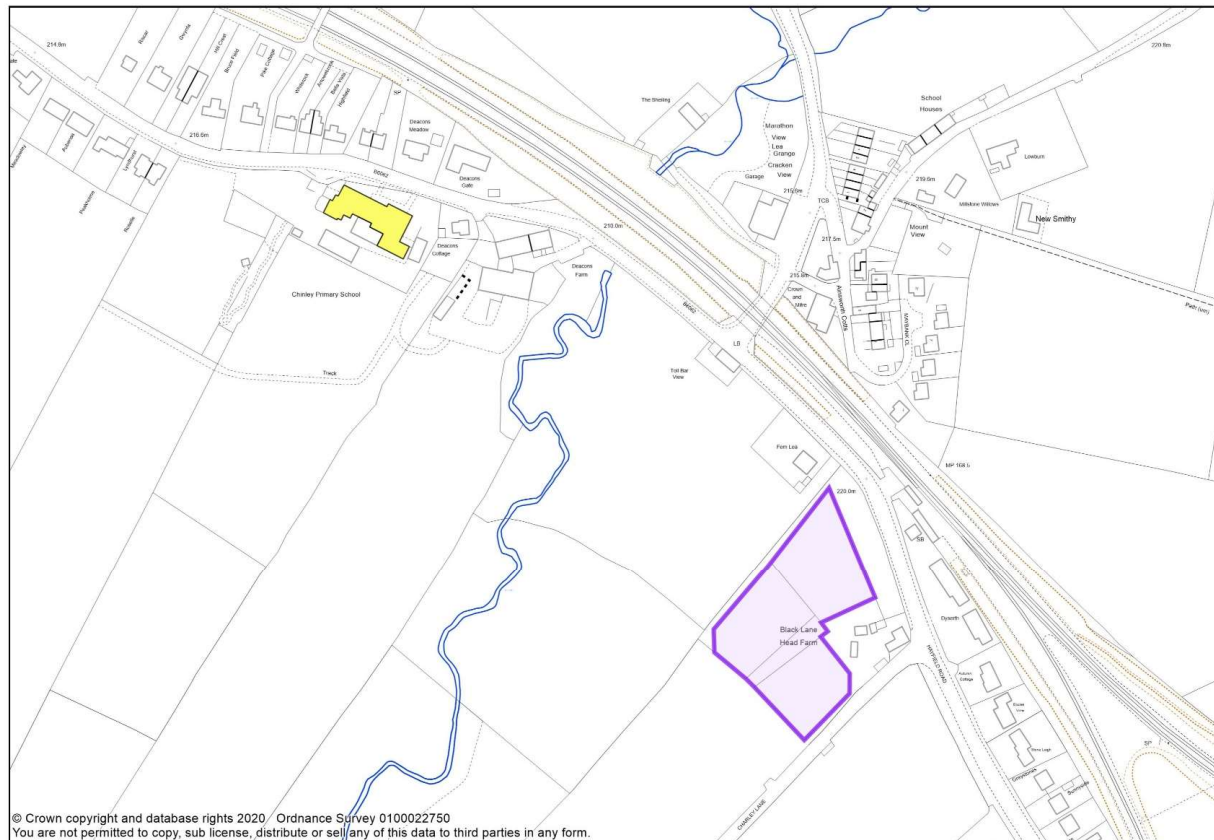
- A1 Shops
- A2 Financial and Professional Services
- A3 Restaurants and Cafes
- A4 Drinking Establishments
- A5 Hot Food Takeaways
- B1 Business
- B2 General Industrial
- B8 Storage or Distribution
- C1 Hotels
- C2 Residential Institutions
- C2A Secure Residential Institution
- C3 Dwellinghouses
- C4 Houses in Multiple Occupation
- D1 Non-Residential Institutions
- D2 Assembly and Leisure
- Camp Site
- Allotments
- Playground
- Playing Field
- Public Car Park
- Sui Generis
- Bus Stop
- Notice Board
- Post Box
- Telephone Box
- Cash Point
- Public Toilets
- ⊕ Defibrillator



Chinley, Buxworth and Brownside Parish Statement (draft)



Chinley Services (3 of 3)



Key

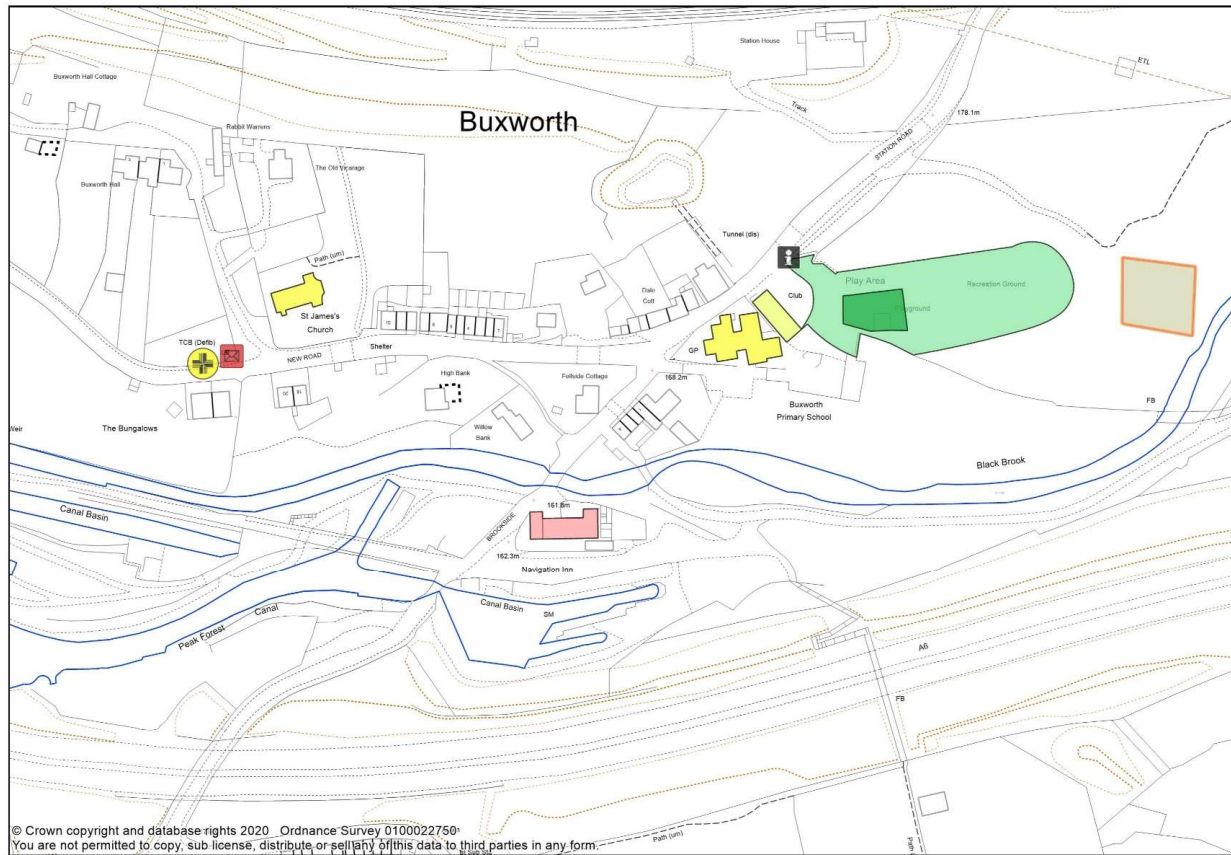
- A1 Shops
- A2 Financial and Professional Services
- A3 Restaurants and Cafes
- A4 Drinking Establishments
- A5 Hot Food Takeaways
- B1 Business
- B2 General Industrial
- B8 Storage or Distribution
- C1 Hotels
- C2 Residential Institutions
- C2A Secure Residential Institution
- C3 Dwellinghouses
- C4 Houses in Multiple Occupation
- D1 Non-Residential Institutions
- D2 Assembly and Leisure
- Camp Site
- Allotments
- Playground
- Playing Field
- Public Car Park
- Sui Generis
- Bus Stop
- Notice Board
- Post Box
- Telephone Box
- Cash Point
- Public Toilets
- Defibrillator



Chinley, Buxworth and Brownside Parish Statement (draft)



Buxworth Services



Key

- A1 Shops
- A2 Financial and Professional Services
- A3 Restaurants and Cafes
- A4 Drinking Establishments
- A5 Hot Food Takeaways
- B1 Business
- B2 General Industrial
- B8 Storage or Distribution
- C1 Hotels
- C2 Residential Institutions
- C2A Secure Residential Institution
- C3 Dwellinghouses
- C4 Houses in Multiple Occupation
- D1 Non-Residential Institutions
- D2 Assembly and Leisure
- Camp Site
- Allotments
- Playground
- Playing Field
- Public Car Park
- Sui Generis
- Bus Stop
- Notice Board
- Post Box
- Telephone Box
- Cash Point
- Public Toilets
- Defibrillator



Chinley, Buxworth and Brownside Parish Statement (draft)

Chinley, Buxworth and Brownside Parish Boundary





Chinley, Buxworth and Brownside Parish Statement (draft)



Data sources

<https://www.chinleybuxworthbrownside-pc.gov.uk/>

Ordnance survey maps

Peak District National Park Conservation Area Appraisals

Peak District National Park Landscape Strategy Action Plan (LSAP)

<http://www.nhs.uk/Service-Search/GP/LocationSearch/4>

<http://www.nomisweb.co.uk>