

# Bonsall Parish Statement



The parish of Bonsall covers an area between Matlock Bath to the east and Aldwarke to the west. Census data has been used for the whole parish, however, the majority of the population in the parish lives outside of the PDNPA.

Bonsall settlement is located approximately 2 miles south west of Matlock and 9 miles south east of Bakewell. It has a small section to the west falling partly within the Peak District National Park (PDNPA).

Bonsall has historically been reliant on agriculture as a source of income for residents and whilst the majority of the residents now commute to nearby towns for employment, the surrounding area is still grazed for sheep and cattle. Other sources of income have included lead mining, quarrying and textile production, specifically home framework knitted stockings during the 18th and 19th century.

Bonsall is characterised by limestone village farmlands located within the White Peak landscape area.

# Bonsall Parish Statement



**Views from the local community:** A Village Design Statement (VDS) was published in 2002 and adopted as Supplementary Planning Guidance by the PDNPA, This followed extensive public consultation from 1997, which established the community's views at that time.

## **Bonsall community aspirations**

Protection of the buildings, structures and areas identified in the VDS survey. The identified principal factors contributing to the character of the village were;

- · Use of local materials and traditional building features
- · Higgledy-piggledy layout of small scale developments hugging the hillside, lots of levels and angles
- · Rural nature, off the beaten track, no through traffic, narrow roads
- · Diversity of styles reflecting changes over the centuries
- · Working village with a church, two pubs, school and the Park.

And the priorities when considering changes were identified as:

- · Traditional construction
- · Affordable Housing
- · Scale and size of any new building
- · Fitting into the landscape
- · In-filling within the village envelope
- · Reduced on-street parking, traffic levels and congestion.

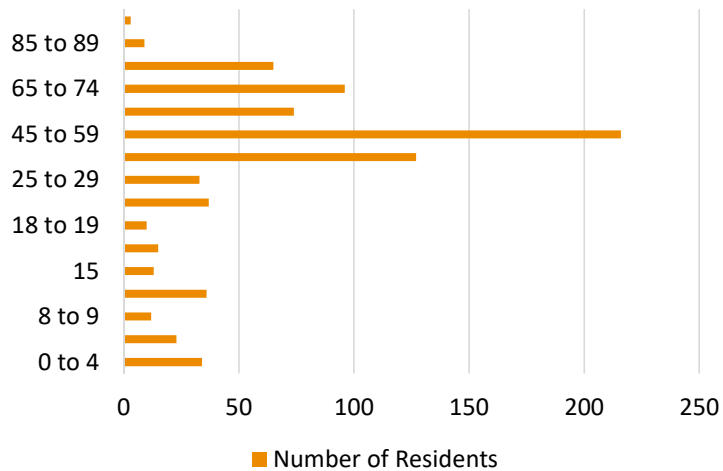


## Bonsall Parish Statement

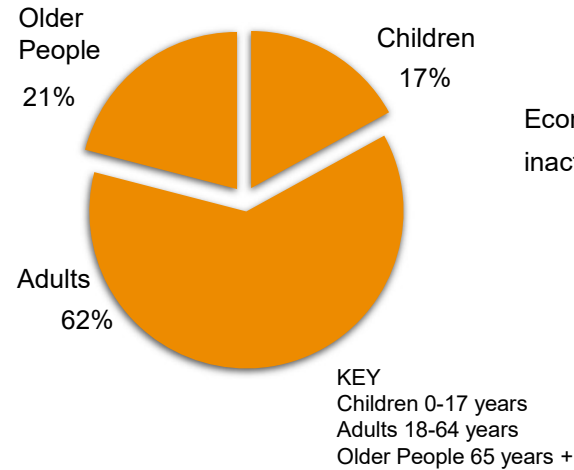


# Population and Demographics

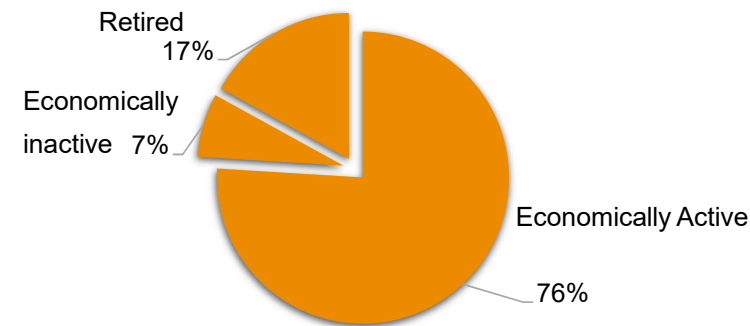
### Population Age Range



### Children, Adults and Older People



### Working and Non Working Adult Population (18+ years)



Source: Census 2011

Bonsall parish has a population of 803 residents (2011 census).

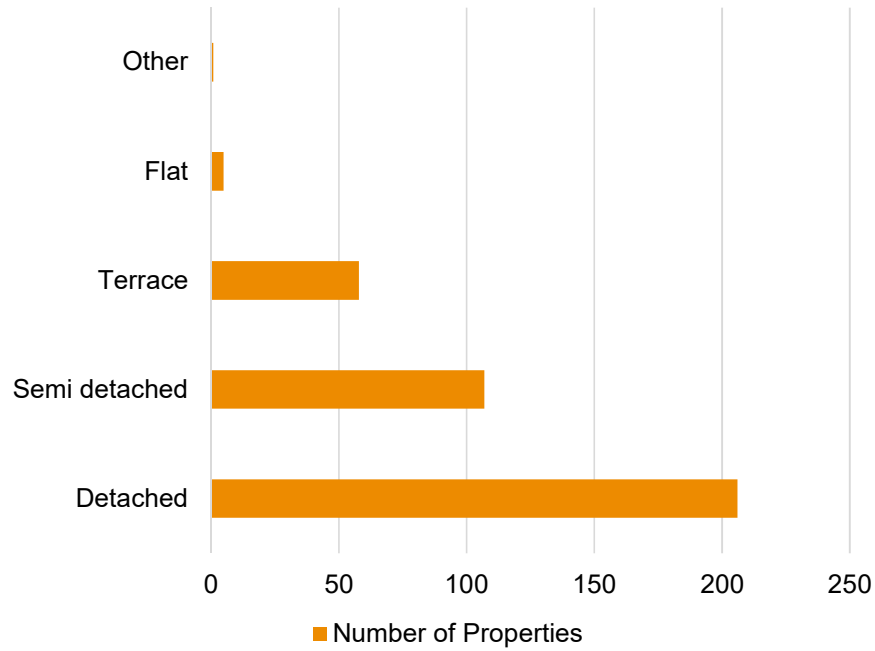


## Bonsall Parish Statement

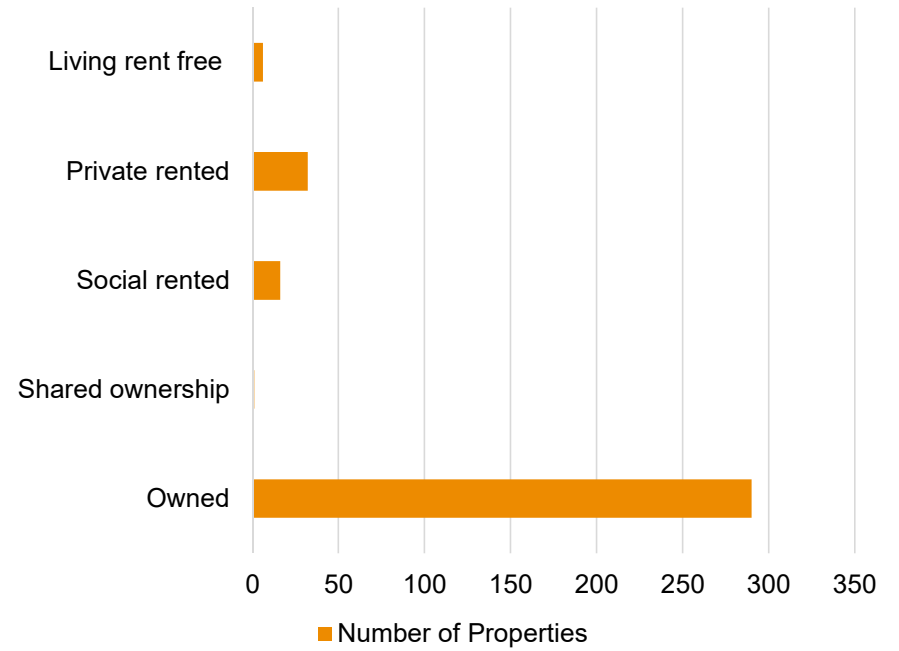


# Housing

### Housing Type



### Housing Tenure



Source: Census 2011

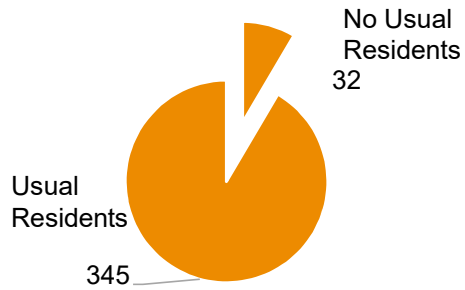


Bonsall Parish Statement



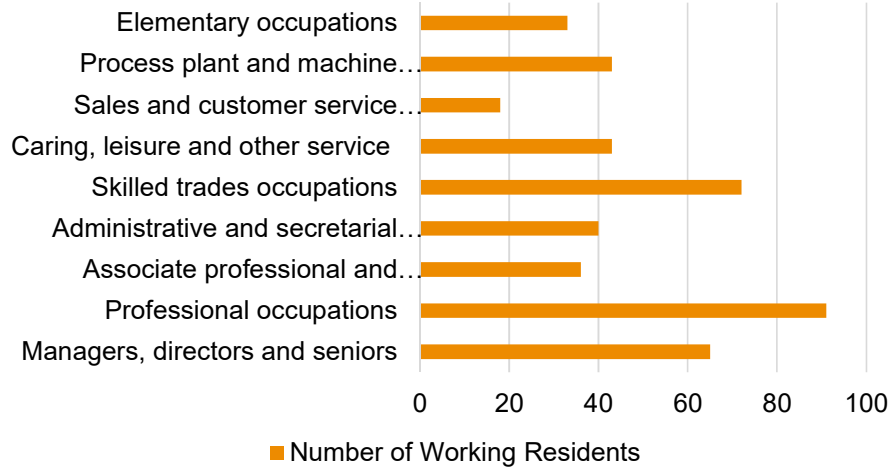
Residency

Occupancy of Properties



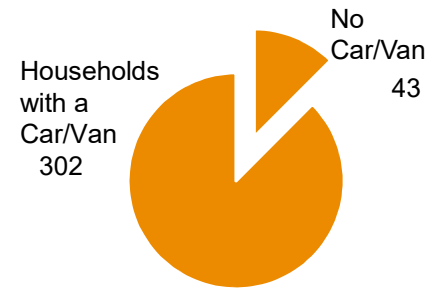
Employment

Occupations of Working Adults



Car/ Van Ownership

Households with a Car/Van



Source: Census 2011



## Bonsall Parish Statement



## Settlement Amenities

Convenience Food Shop	★
Post Office	★
Primary School	★
Community Hall	★
Playground	★
Playing Field	★
Industrial Units	★
Distance to General Practice (miles)	2.7
Within 1 Mile of an A or B Road	★
Good Public Transport Route (5+ services a day)	—
Public House	★
Post Box	★
Church	★
Mobile Library	★
Conservation Area	★
Website/Newsletter	★
Groups	★
Events/Traditions	★
Accommodation	★

## Community

General	Friends of T'Owd Man of Bonsall History group
Events/ Traditions	Bonsall Carnival, Village lunch, Open Gardens, Arts Trail, Well Dressing

Key  
 ★ Is present  
 — Is not present

Source: Parish Council



## Bonsall Parish Statement



### Access to Essential Services

	Service	Time in Minutes
Walking	General Practice	60+
	Pharmacy	60+
	Post Office	30-40
	Primary School	0-10
	Secondary School	60+
	Shop	30-40
Public Transport	General Practice	20-30
	Pharmacy	20-30
	Post Office	10-20
	Primary School	0-10
	Secondary School	20-30
	Shop/Supermarket	10-20

Source: Derbyshire County Council

### Planning

Over the last 5 years, 13 planning applications have been approved in Bonsall parish (within the national park boundary).

### Digital Presence

### Affordable Housing

### Public Transport

Bonsall	Route	Bus Company	Days	Frequency
216	Matlock—Bonsall	Stagecoach	Mon—Sat	Mon-Sat 4 services a day

Source:  
<https://www.derbybus.info/times/timetables/>

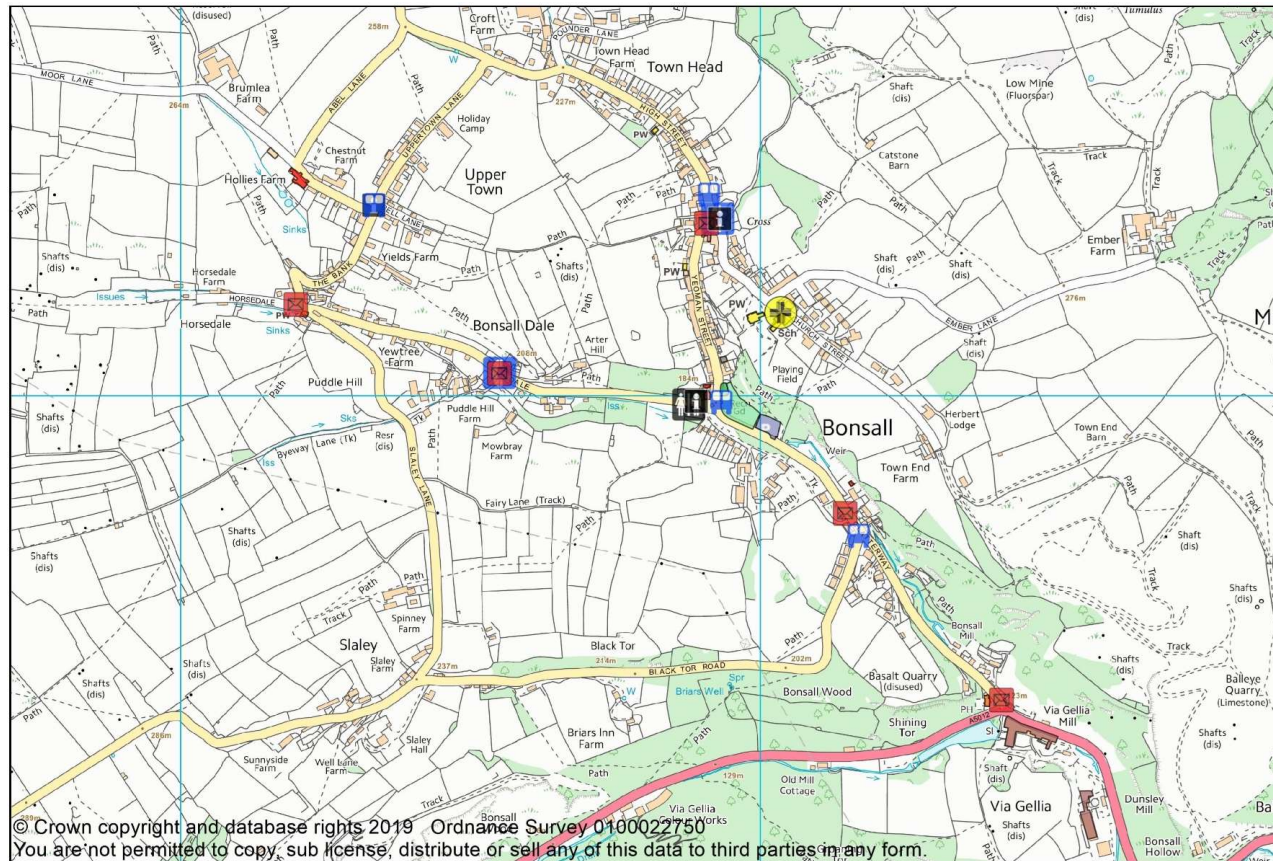




# Bonsall Parish Statement



## Bonsall Services



### Key

- A1 Shops
- A2 Financial and Professional Services
- A3 Restaurants and Cafes
- A4 Drinking Establishments
- A5 Hot Food Takeaways
- B1 Business
- B2 General Industrial
- B8 Storage or Distribution
- C1 Hotels
- C2 Residential Institutions
- C2A Secure Residential Institution
- C3 Dwellinghouses
- C4 Houses in Multiple Occupation
- D1 Non-Residential Institutions
- D2 Assembly and Leisure
- Camp Site
- Allotments
- Playground
- Playing Field
- Public Car Park
- Sui Generis
- Bus Stop
- Notice Board
- Post Box
- Telephone Box
- Cash Point
- Public Toilets
- Defibrillator

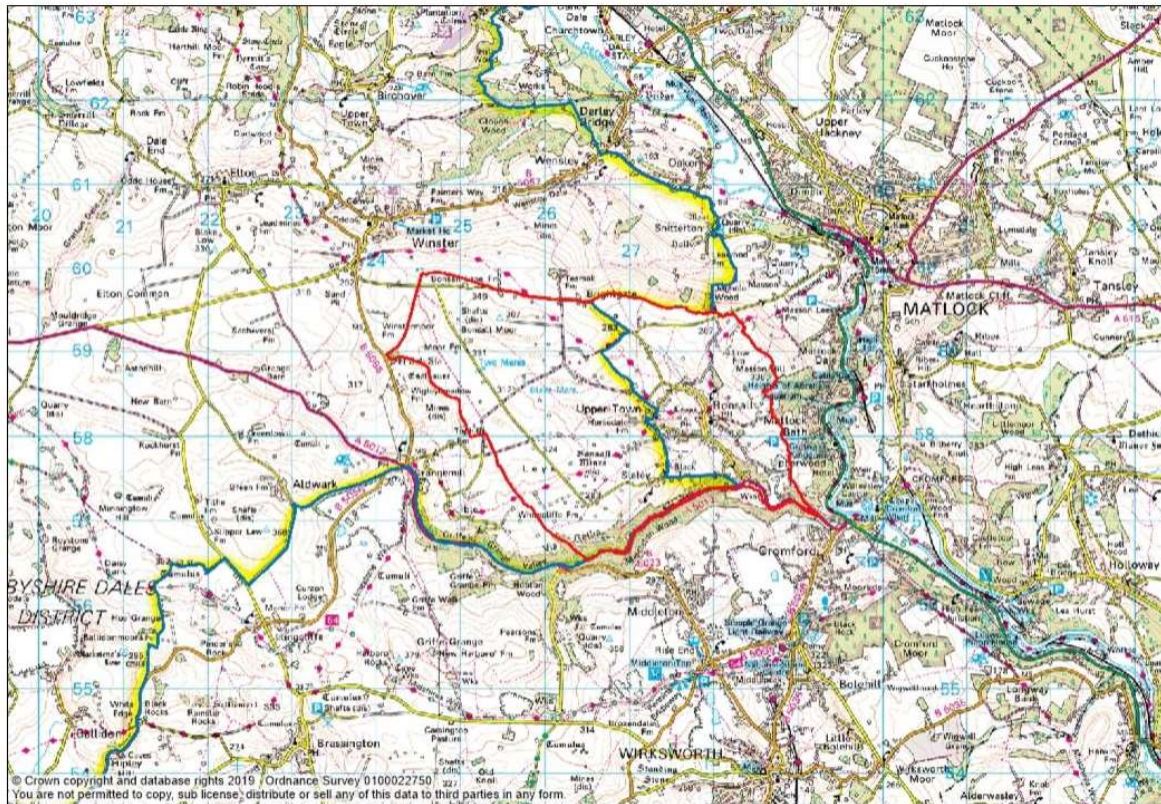




## Bonsall Parish Statement



## Bonsall Parish Boundary





## Bonsall Parish Statement



### **Data sources**

Derbyshire Accessibility Assessment 2016, Derbyshire County Council  
Ordnance survey maps  
Peak District National Park Conservation Area Appraisal  
Peak District National Park Landscape Strategy Action Plan (LSAP)

<https://www.derbybus.info/times/timetables/>  
<https://www.nhs.uk/Service-Search/GP/LocationSearch/4>  
<https://www.nomisweb.co.uk>