

Tintwistle Parish Statement (draft)



Photo needed here

Tintwistle is located on the boundary between the National Park and High Peak Borough Council, 1 mile north of Hadfield. The part of the village to the east of Bank Lane and Arnfield Lane is within the National Park. It is a busy settlement as the A628 road between Manchester and Barnsley passes through the village.

The Conservation Area was designated in 1995 and the Conservation Area Appraisal states that the village was the only settlement in the Longendale area to be named in the Domesday Book. Historically the villagers sought employment from a variety of means including agriculture, quarrying, rope-making and cottage industry and later from the mills at Longendale and the construction of the nearby reservoirs.

Tintwistle is located within the area characterised with valley pastures with industry in the Dark Peak Western Fringe (LSAP 2009).

Tintwistle Parish Statement (draft)

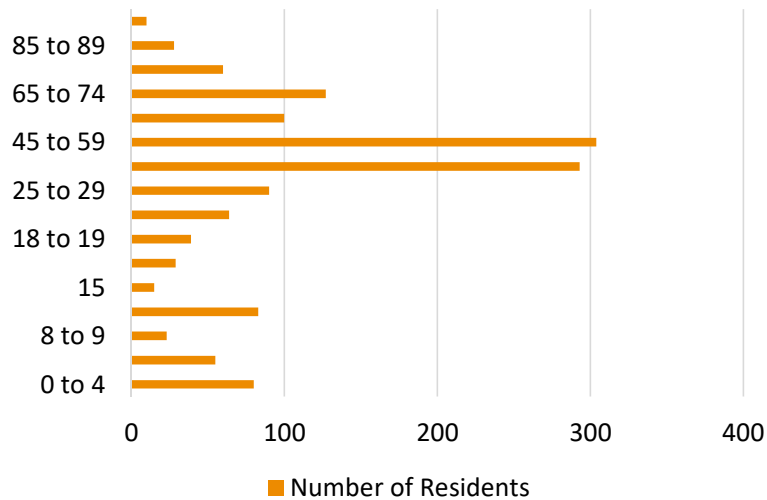


Community Aspirations

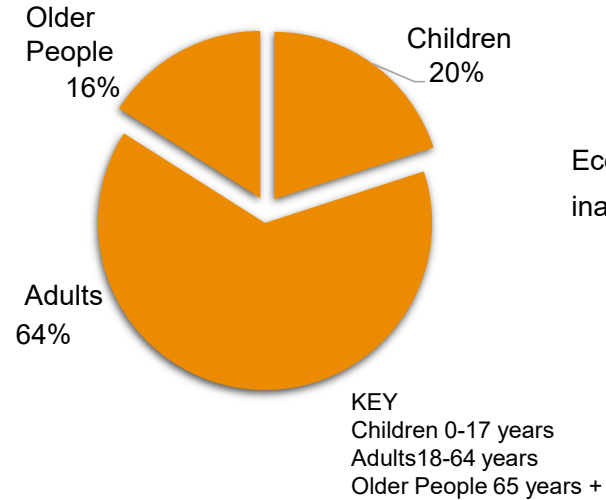


Population and Demographics

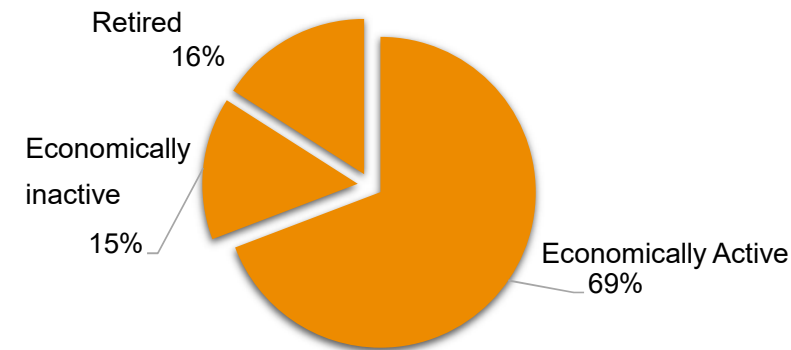
Population Age Range



Children, Adults and Older People



Working and Non Working Adult Population (18+ years)



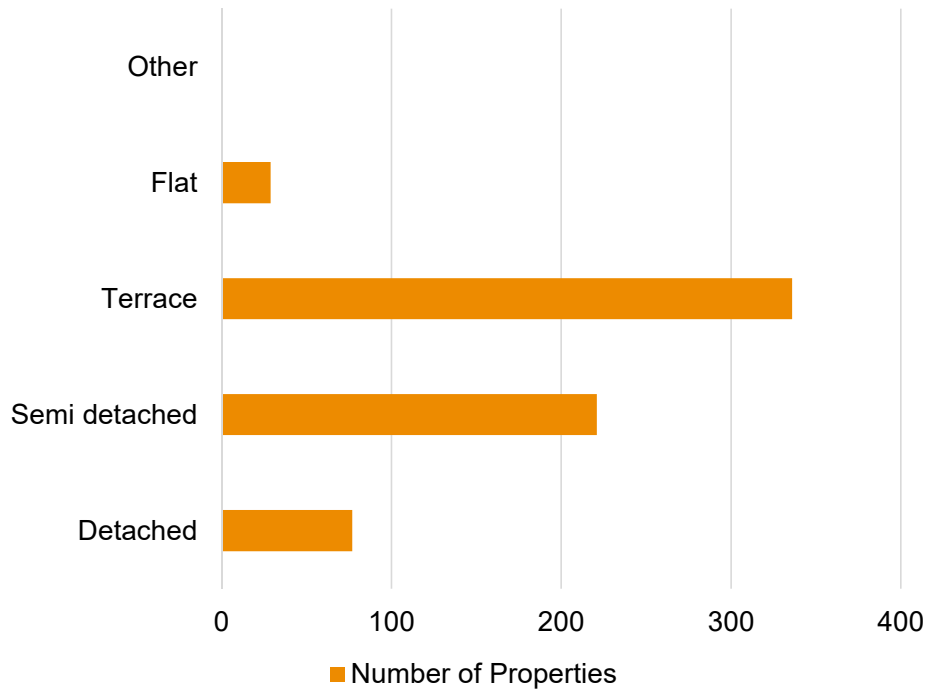
Source: Census 2011

Tintwistle parish has a population of 1400 residents (2011 census).

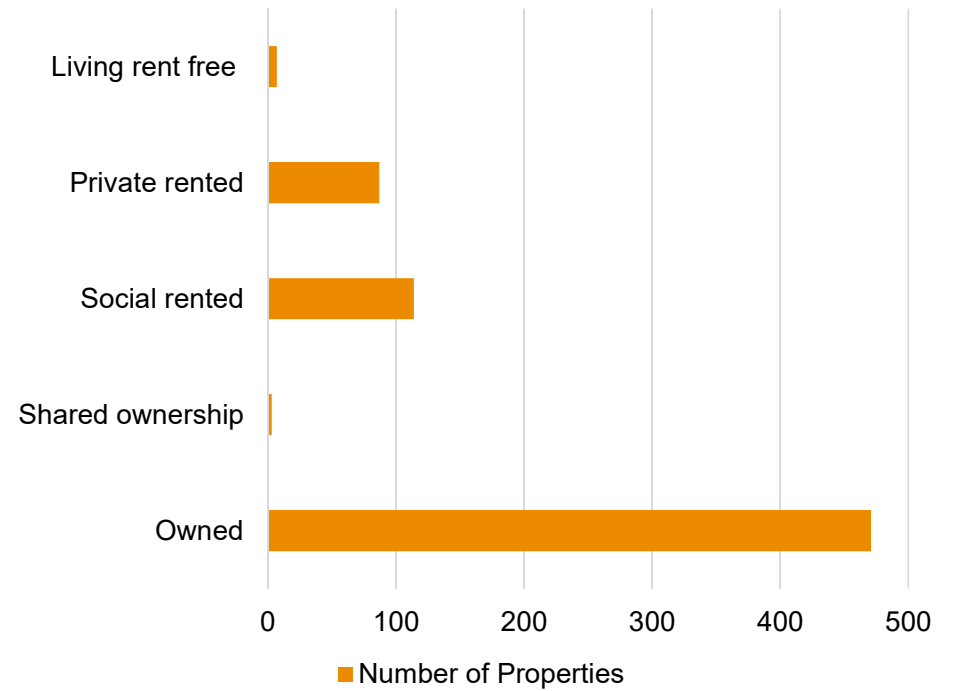


Housing

Housing Type



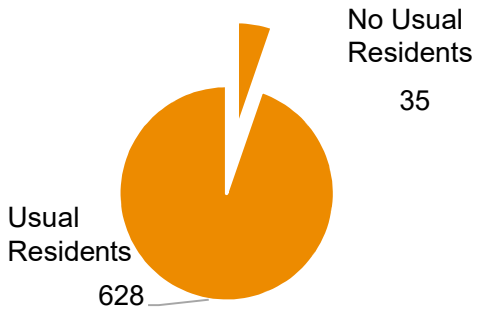
Housing Tenure





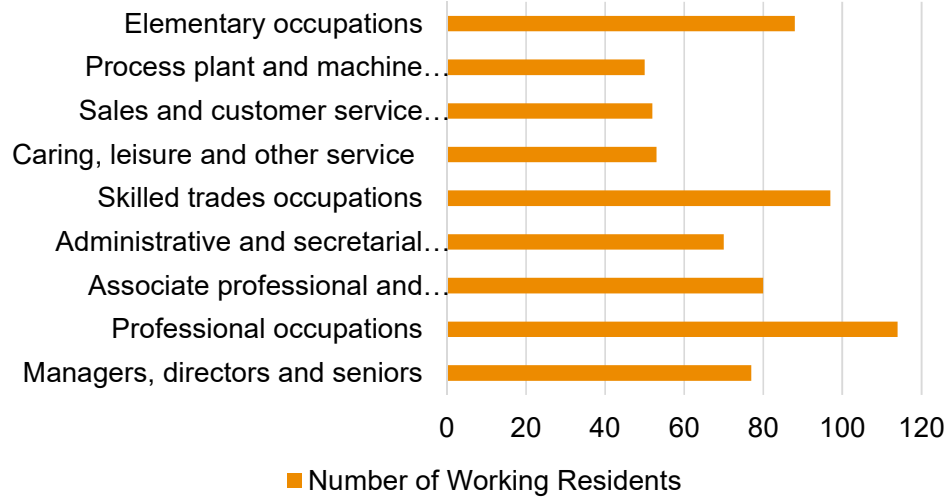
Residency

Occupancy of Properties



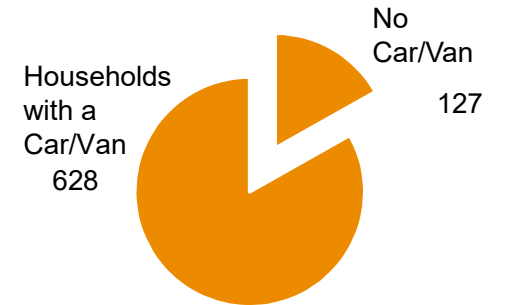
Employment

Occupations of Working Adults



Car/ Van Ownership

Households with a Car/Van





Settlement Amenities

Convenience Food Shop	Post Office	Primary School	Community Hall	Playground	Playing Field	Industrial Units	Distance to General Practice (miles)	Within 1 Mile of an A or B Road	Good Public Transport Route (5+ services a day)	Public House	Post Box	Church	Mobile Library	Conservation Area	Website/Newsletter	Groups	Events/Traditions	Accommodation
★	—	★	★	★	★	★	0.4	★	★	★	★	★	★	★	★	★	★	★

Key
 ★ Is present
 — Is not present

Public Transport

Tintwistle	Route	Bus company	Days	Frequency
237	Glossop – Ashton	Stagecoach Manchester & Manchester Community Transport	Mon-Sun	Mon –Fri btwn 05:57 – 23:56, Sat btwn 07:30 – 23:56, Sun btwn 07:40 – 23:46. Approx. half hourly or more frequent.

Source:
<https://www.derbybus.info/times/timetables/>



Access to Essential Services

	Service	Time in Minutes
Walking	General Practice	10-20
	Pharmacy	10-20
	Post Office	10-20
	Primary School	0-10
	Secondary School	40-50
	Shop	0-10
Public Transport	General Practice	0-10
	Pharmacy	0-10
	Post Office	0-10
	Primary School	0-10
	Secondary School	10-20
	Supermarket	0-10

Community

General	Brass Band, Bowling, Cricket, Allotment Association.
Events/ Traditions	Well Dressing, Children’s Gala, Village Fruit, Flower and Vegetable Show. Remembrance Day procession and service.

Source: Parish Council

Planning

Over the last 5 years 9 planning applications have been approved in Tintwistle parish (within the national park).

Digital Presence

<https://tintwistleparishcouncil.org.uk/>

Affordable Housing

There are no plans for affordable housing in the parish at present.

Tintwistle and its Services



Key

- A1 Shops
- A2 Financial and Professional Services
- A3 Restaurants and Cafes
- A4 Drinking Establishments
- A5 Hot Food Takeaways
- B1 Business
- B2 General Industrial
- B8 Storage or Distribution
- C1 Hotels
- C2 Residential Institutions
- C2A Secure Residential Institution
- C3 Dwellinghouses
- C4 Houses in Multiple Occupation
- D1 Non-Residential Institutions
- D2 Assembly and Leisure
- Camp Site
- Allotments
- Playground
- Playing Field
- Public Car Park
- Sui Generis
- Bus Stop
- Notice Board
- Post Box
- Telephone Box
- Cash Point
- Public Toilets
- Defibrillator



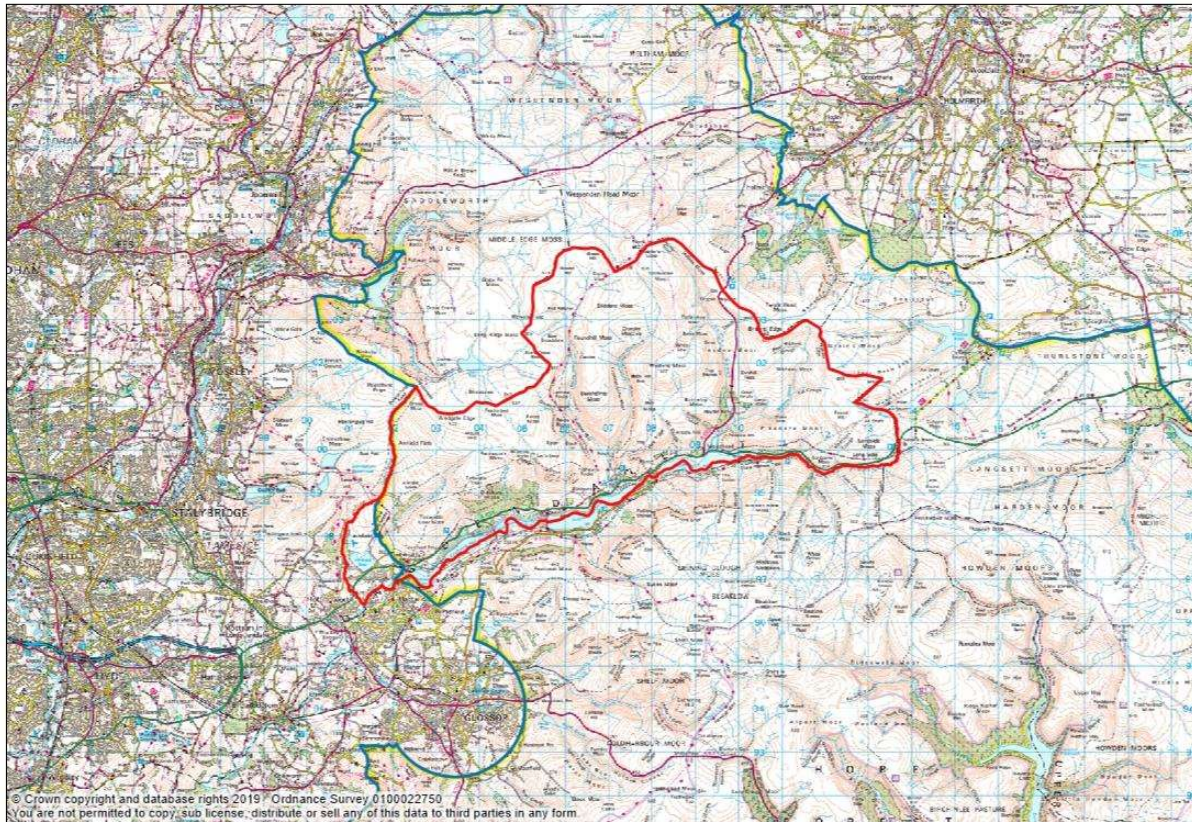
Tintwistle and its Services



Key on previous page



Tintwistle Parish Boundary



Tintwistle Parish Statement (draft)



Data sources

Derbyshire County Council

Ordnance survey maps

Peak District National Park Conservation Area Appraisal

Tintwistle Parish Council

<https://www.derbysbus.info/times/timetables/>

<https://www.nhs.uk/Service-Search/GP/LocationSearch/4>

<https://www.nomisweb.co.uk>

<https://tintwistleparishcouncil.org.uk/>