

# Onecote Parish Statement (draft)



Photo needed here

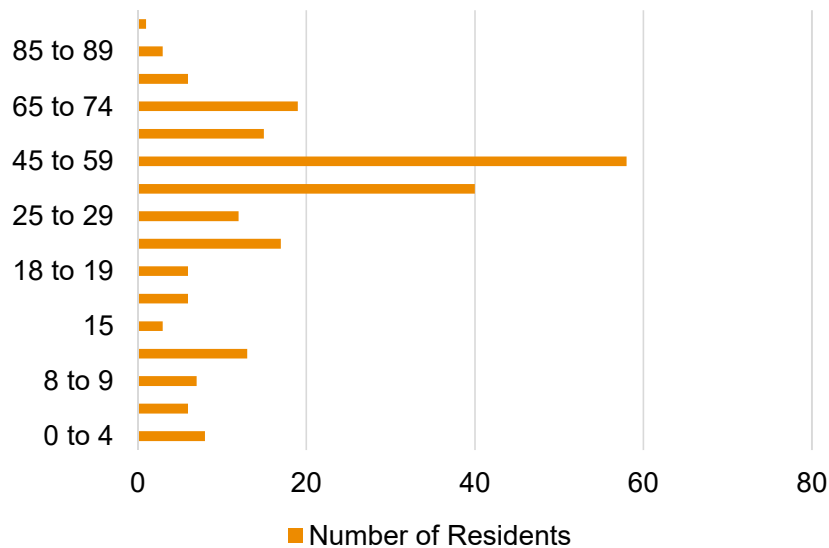
Onecote settlement, dating back to the 12th century, is a farming community located approximately 5 miles east of Leek and just over 3 miles north west of Waterhouses. The settlement has an open feel to it by virtue of its origins in agriculture which was the mainstay occupation. The River Hamps flows through the settlement and the B5053 provides access to Buxton.

Onecote is located in the 'upper valley pastures' character area of the South West Peak landscape area (LSAP 2009).

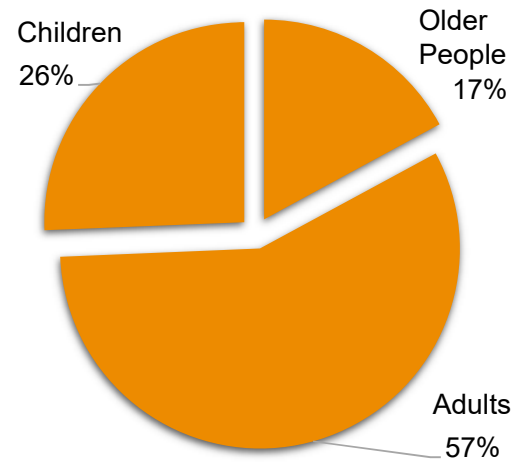


## Population and Demographics

### Population Age Range

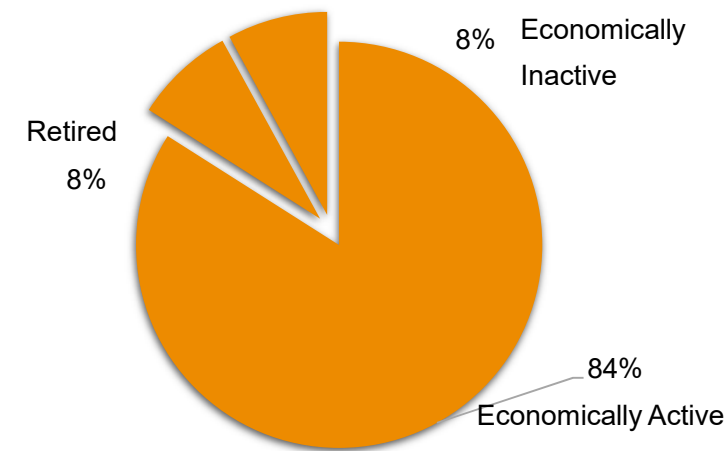


### Children, Adults and Older People



KEY  
Children 0-17 years  
Adults 18-64 years  
Older People 65 years +

### Working and Non Working Adult Population (18+ years)



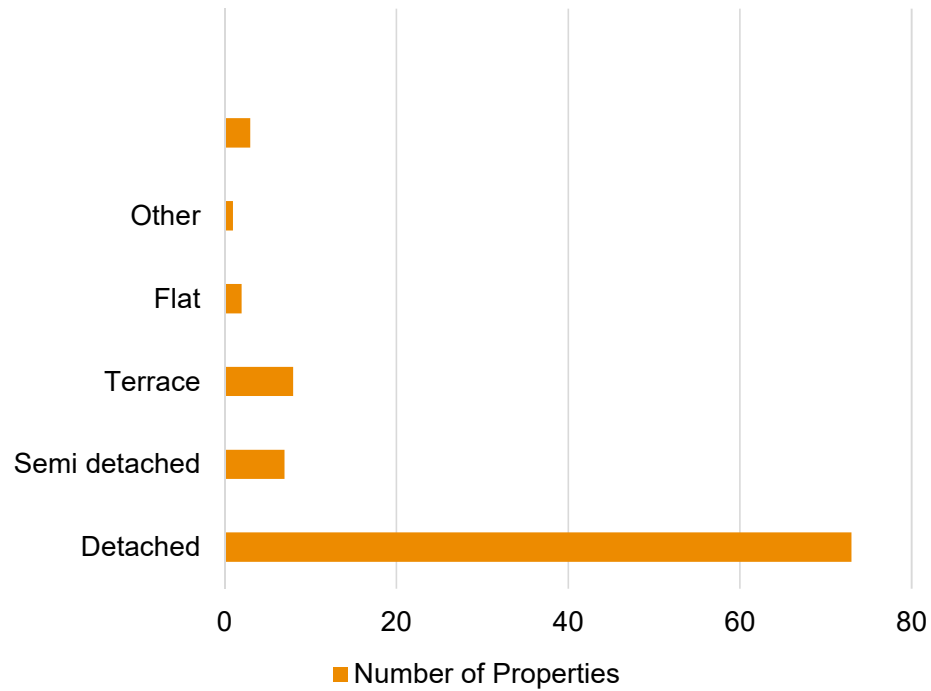
The parish of Onecote has a population of 220 residents (2011 census).

Data source: Census 2011

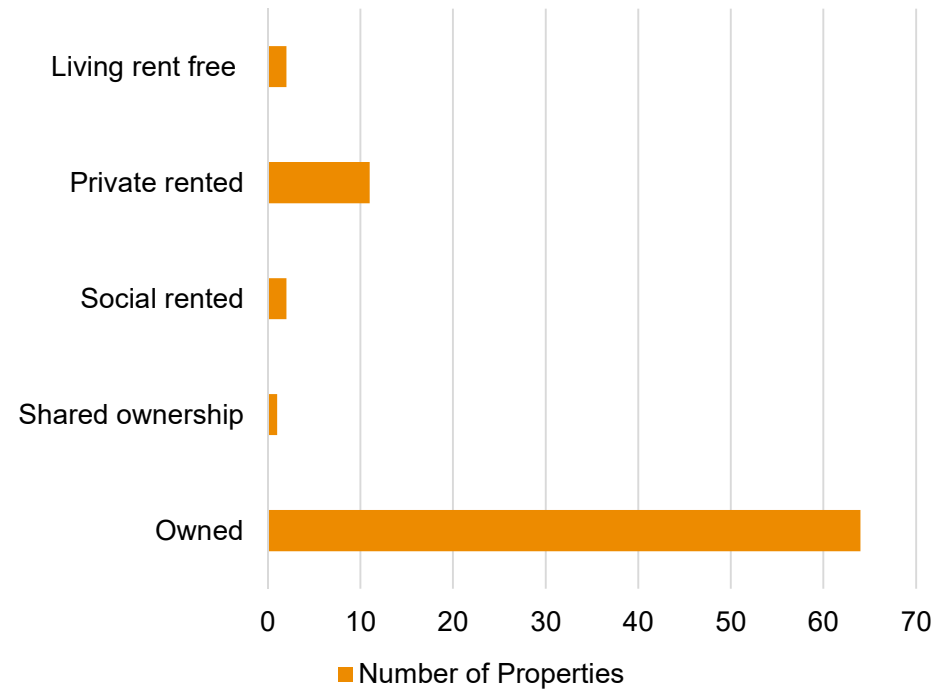


# Housing

## Housing Type



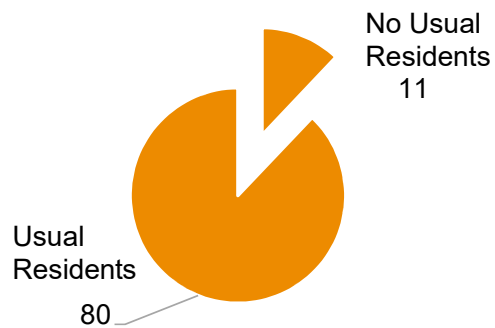
## Housing Tenure





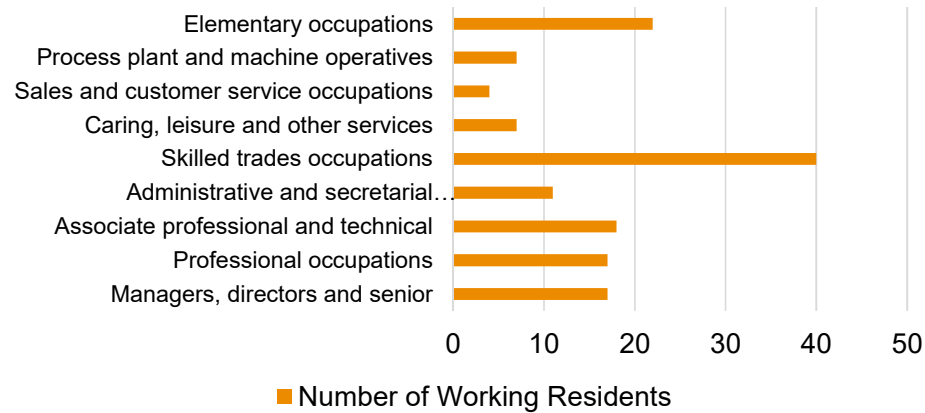
## Residency

### Occupancy of Properties



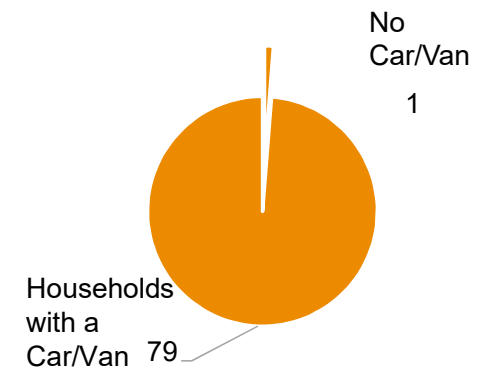
## Employment

### Occupations of Working Adults



## Car/ Van Ownership

### Households with a Car/Van





## Settlement Amenities

Accommodation	★
Events/Traditions	★
Groups	★
Website/Newslatter	★
Conservation Area	★
Mobile Library	—
Church	★
Post Box	★
Public House	★
Good Public Transport Route (5+ services a day)	—
Within 1 Mile of an A or B Road	★
Distance to General Practice (miles)	5
Industrial Units	—
Playing Field	—
Playground	—
Community Hall	★
Primary School	—
Post Office	—
Convenience Food Shop	—

Key



Is present

Is not present



## Public Transport

Onecote	Route	Bus Company	Days	Times	Frequency
Moorlands Connect	Around Leek area	Ashbourne Community Transport	Mon-Fri	Between 8:00-16:00	Demand responsive

Source:  
<http://www.derbybus.info/>

## Community

Sports Clubs	Bowling
General	Art Classes Bingo Exercise Classes Gardening Club Reading Group Whist
Events/Traditions	Church and Village Hall fundraising events Comedy Night Plant Sale

Source: Parish Council

Onecote Parish Statement  
(draft)



Planning

Over the last 5 years 28 planning applications have been approved in the parish.

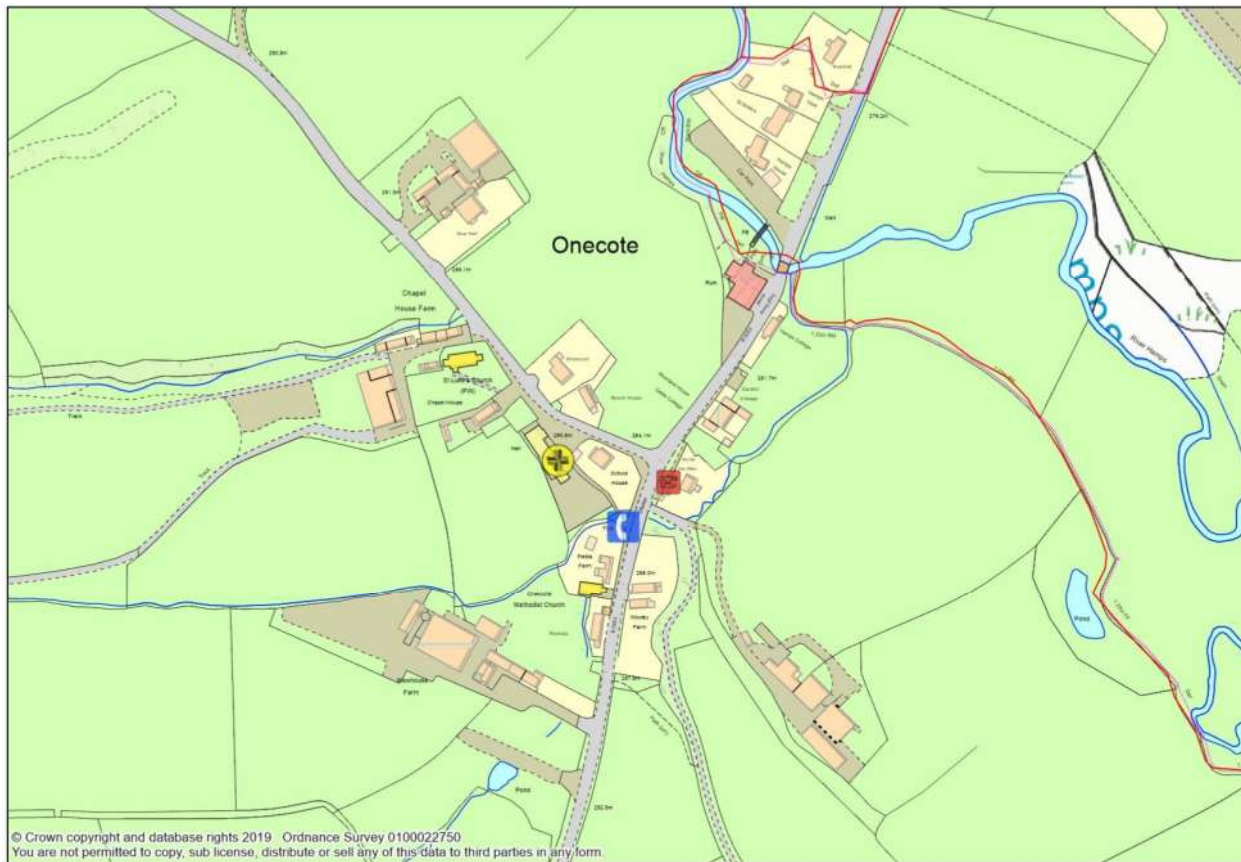
Digital Presence

<https://sites.google.com/site/onecotevillagehall/onecote-parish-council>

Affordable Housing

There are no plans to deliver affordable housing in Onecote at present.

## Onecote and its Services



### Key

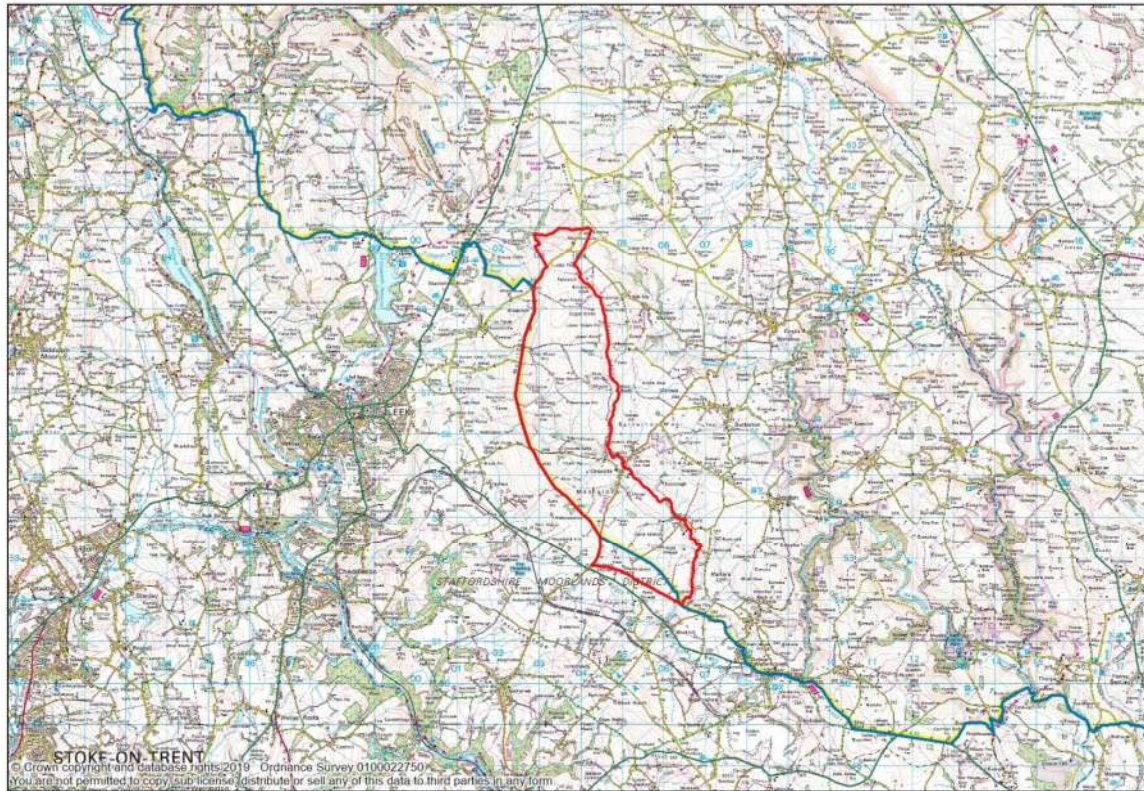
-  A1 Shops
-  A2 Financial and Professional Services
-  A3 Restaurants and Cafes
-  A4 Drinking Establishments
-  A5 Hot Food Takeaways
-  B1 Business
-  B2 General Industrial
-  B8 Storage or Distribution
-  C1 Hotels
-  C2 Residential Institutions
-  C2A Secure Residential Institution
-  C3 Dwellinghouses
-  C4 Houses in Multiple Occupation
-  D1 Non-Residential Institutions
-  D2 Assembly and Leisure
-  Camp Site
-  Allotments
-  Playground
-  Playing Field
-  Public Car Park
-  Sui Generis
-  Bus Stop
-  Notice Board
-  Post Box
-  Telephone Box
-  Cash Point
-  Public Toilets
-  Defibrillator



Onecote Parish Statement  
(draft)



## Onecote Parish Boundary



Onecote Parish Statement  
(draft)



## Data sources

Onecote Parish Council  
Ordnance survey maps  
Peak District National Park Conservation Area Appraisals  
Peak District National Park Landscape Strategy Action Plan (LSAP)  
<http://www.derbybus.info/>  
<https://www.nhs.uk/Service-Search/GP/LocationSearch/4>  
<http://www.nomisweb.co.uk>