

Peak District Local Nature Partnership

Newsletter : 2 Spring/Summer 2013



“A thriving and inspiring landscape richer in bio- and geo-diversity; where a valued natural and cultural environment, central to decision making, is managed for wildlife, promotes healthier lives and benefits the local economy”

What's been happening

Defra-appointed consultants have carried out an evaluation on the establishment of LNPs, the results are expected in June. Emerging findings show concern about lack of funding, difficulty of liaison with LEPs, no central website or communications across all the LNPs.

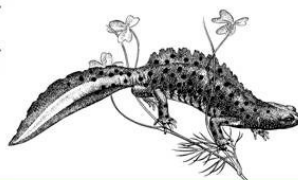
The Peak District LNP Interim Board has now met three times since we received LNP status from Government.

The LNP Interim Board comprises: Geoff Nickolds (PDNPA Deputy Chair and Chair of the LNP IB), Jane Chapman (Assistant Director Land Management, PDNPA), Alison Pritchard (Consultant in Public Health, Derbyshire County Council), Anne Robinson (Friends of the Peak District), Neil Moulden (Derbyshire Dales Council for Voluntary Service, Rural Action Derbyshire), Jane Marsden (Parish Council representative & Thorpe Farm, Hathersage), Peter Dewhurst (University of Derby, Business Peak District), Harry Bowell (Assistant Director of Operations, National Trust), Paul Roden (Visit Peak District Board, Business Peak District), Tom Moat (Natural England Area Manager), Penny Anderson (Penny Anderson Associates).

The LNP Constitution has been agreed, which is guiding the activity of the Interim Board, and the following pieces of work have been initiated:

- ◆ Proposal to produce a Geodiversity Action Plan for the Peak District
- ◆ Project initiation meeting for a landscape-scale project in the South West Peak
- ◆ Ideas for a White Peak-based project in response to the threat of ash dieback
- ◆ Planning for a Partnership forum in the Autumn
- ◆ Meeting with representatives of the Lowland Derbyshire and Nottinghamshire LNP

www.peakdistrict.gov.uk/lnp



Useful information

National Parks, National Assets

A new report, "Valuing England's National Parks", published by National Parks England shows the importance of National Parks not just as iconic landscapes and part of our national identity, but as thriving rural economies contributing to national prosperity and wellbeing through their special qualities. Read the full report here: www.nationalparksengland.org.uk/home/policy/valuing-national-parks

The Natural Health Service

The NHS Forest is an exciting national project coordinated by the Centre for Sustainable Healthcare. The project's central aims are:



- ♦ Improving health of staff, patients and communities through increasing access to green space on or near to NHS land.
- ♦ Greening the NHS Estates and with a target of 1 tree per employee amounting to 1.3 million trees.
- ♦ Encouraging greater social cohesion between NHS sites and the local community.
- ♦ Bringing together a range of professionals and volunteers to produce woodland that includes the use of art, food crops, woodfuel and biodiversity.

To find out more, visit the website here: www.nhsforest.org/

Giving Back

Payment for Ecosystem Services best practice guide is now available here:

www.gov.uk/government/publications/payments-for-ecosystem-services-pes-best-practice-guide

State of Nature

The UK's wildlife organisations have joined forces to undertake a health check of nature in the UK and its Overseas Territories, see the report here: www.rspb.org.uk/ourwork/science/stateofnature

Ecominds is a BIG Lottery funded programme that has supported over 130 projects throughout England that work with the natural environment to help people with pre-existing mental health conditions improve their mental health and wellbeing. An Ecominds northwest networking event is taking place in Manchester on the 9th of July. This is an opportunity for anyone involved or interested in using nature as a tool to improve mental health to come together and share best practice and problems, whilst talking about ways to work together in any future plans. To find out more go to the website here: www.mind.org.uk/help/ecominds/ecominds/newsletter/regional_networking_events_for_2013

Read the latest BAP report here: www.peakdistrict.gov.uk/looking-after/biodiversity/news

