

# Tendering for Local Moorland Restoration Contracts - Peak District National Park context

Sue Fletcher  
Peak District National Park Authority

March 2011

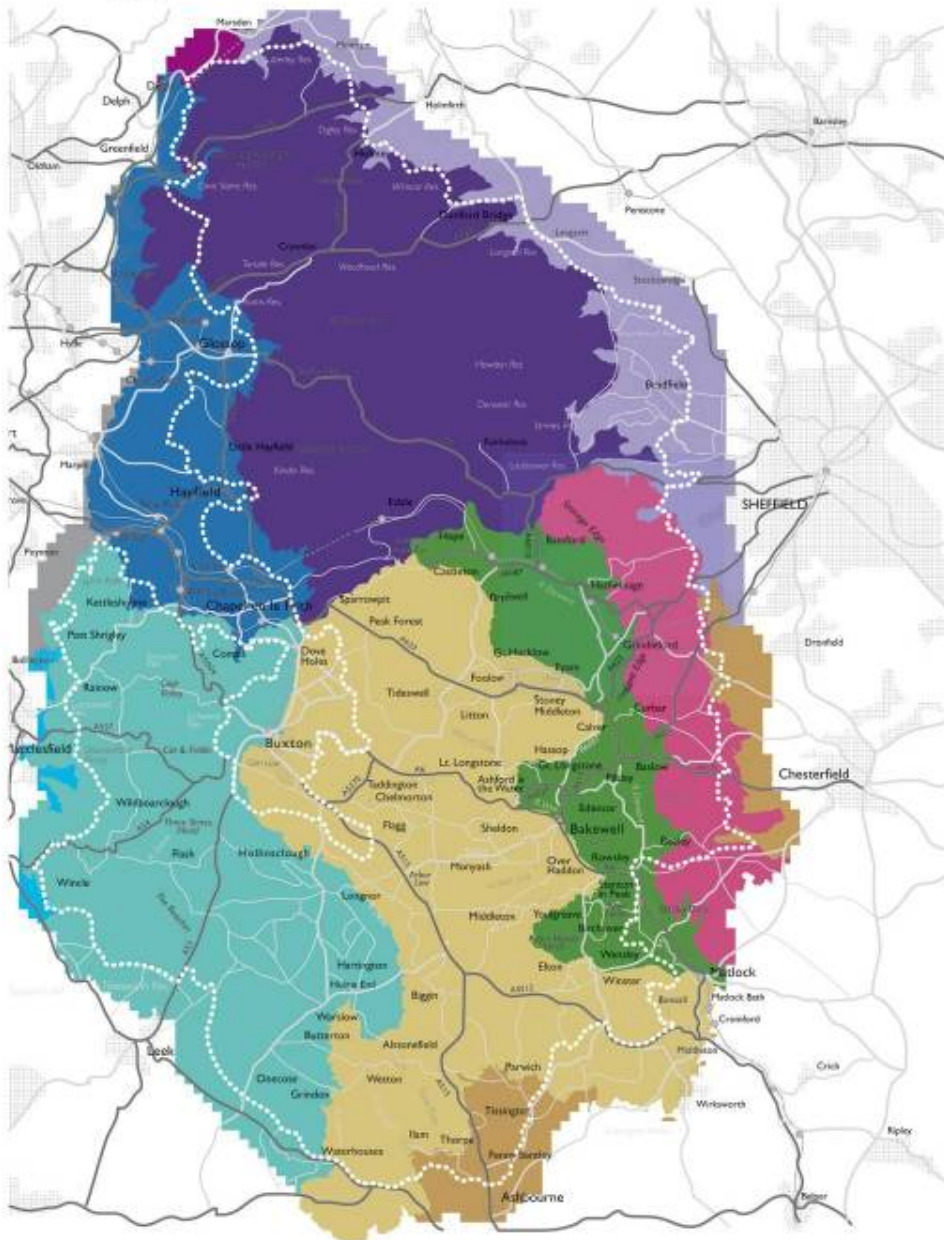
## Peak District National Park (PDNP) context

- Why this event?
- Landscape character areas
- Habitats
- Moorland landscapes and habitats
- Sources of funding
- What can be achieved – landscape and habitats improvements
- What you can do and how that helps you and the Peak District

## Why this event?

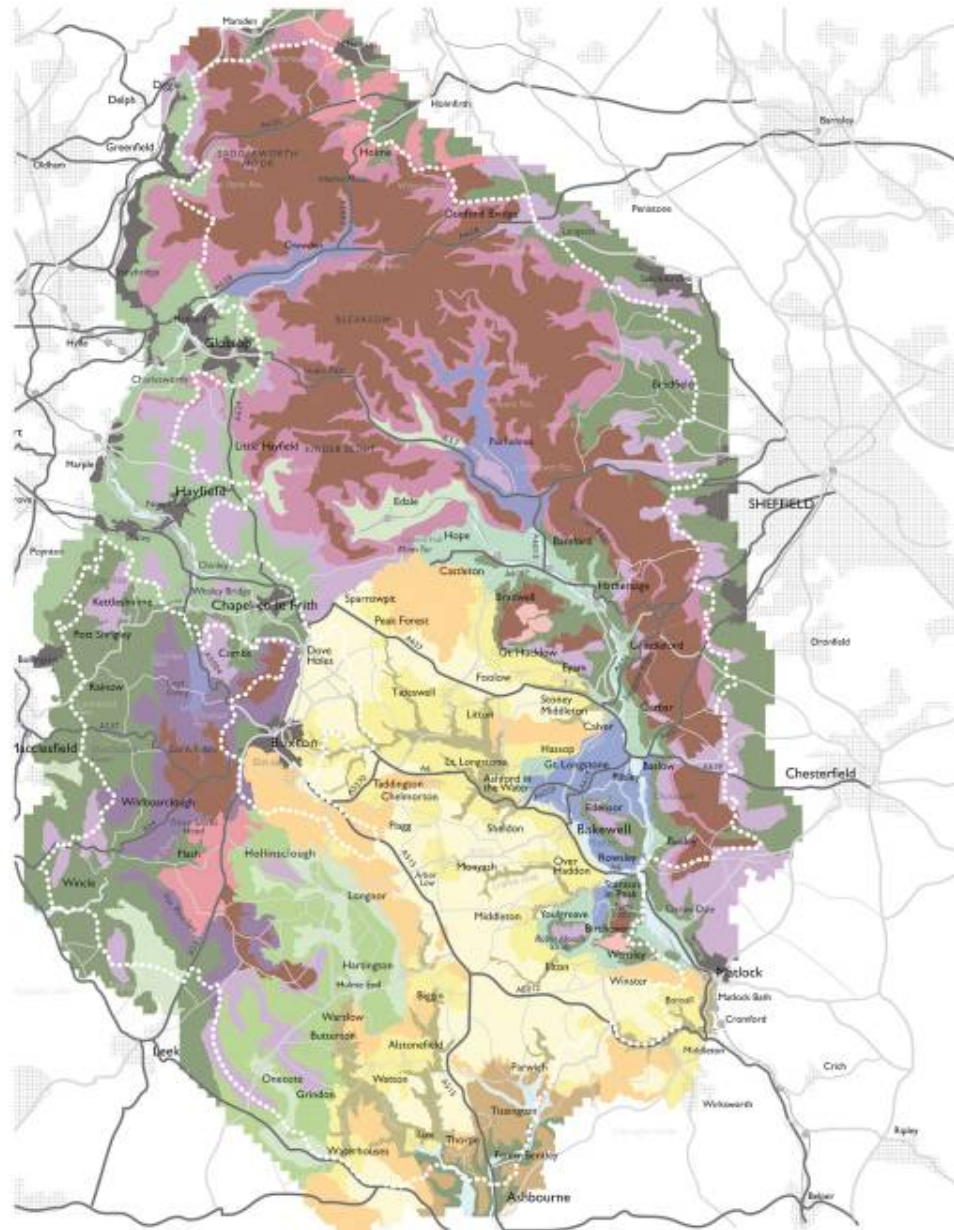
- Moors for the Future – feedback that there is a lack of local contractors bidding for tenders
- Land Managers Forum – group of farmers, land managers & PDNPA representatives working to agree a set of principles for farming in the Peak District National Park
- Individual farmer and land manager feedback
- Live & Work Rural – research with farmers and contractors
  - Tender & contract paperwork
  - Collaboration & networking

# Landscape Character Areas



- Dark Peak
  - Dark Peak Western Fringe
  - Dark Peak Yorkshire Fringe
  - South West Peak
  - White Peak
  - Derwent Valley
  - Eastern Moors
  - Derbyshire Peak Fringe
- Adjoining Regional Character Areas (no detailed assessment)**
- South Pennines
  - Manchester Pennine Fringe
  - Cheshire & Staffordshire Plain

# Landscape Character Types



- Open moors
- Moorland hills & ridges
- Moorland slopes & cloughs
- Enclosed gritstone upland
- Densely enclosed gritstone upland
- Wooded slopes & valleys
- Reservoir valleys
- Limestone hills & slopes
- Limestone dales
- Limestone plateau pastures
- Limestone village farmlands
- Gritstone village farmlands
- Estatelands
- Village farmlands on shale ridges
- Upland pastures
- Upper valley pastures
- Valley pastures with industry
- Valley farmlands with villages
- Riverside meadows
- Urban

## White Peak Habitats

- Limestone Dales
- Upland Ashwoods
- Hay Meadows
- Unimproved Pastures
- Lead Rakes
- Limestone Heath



## South-West Peak Habitats

- In-bye Land
- Heather Moorland
- Rush Pasture
- Blanket Bog
- Hay Meadows
- Rough Grazing
- Conifer Plantations



## Dark Peak Habitats

- Heather Moorland
- Blanket Bog
- Upland Oak/birchwoods
- Rough Grazing
- Conifer Plantations
- Reservoirs



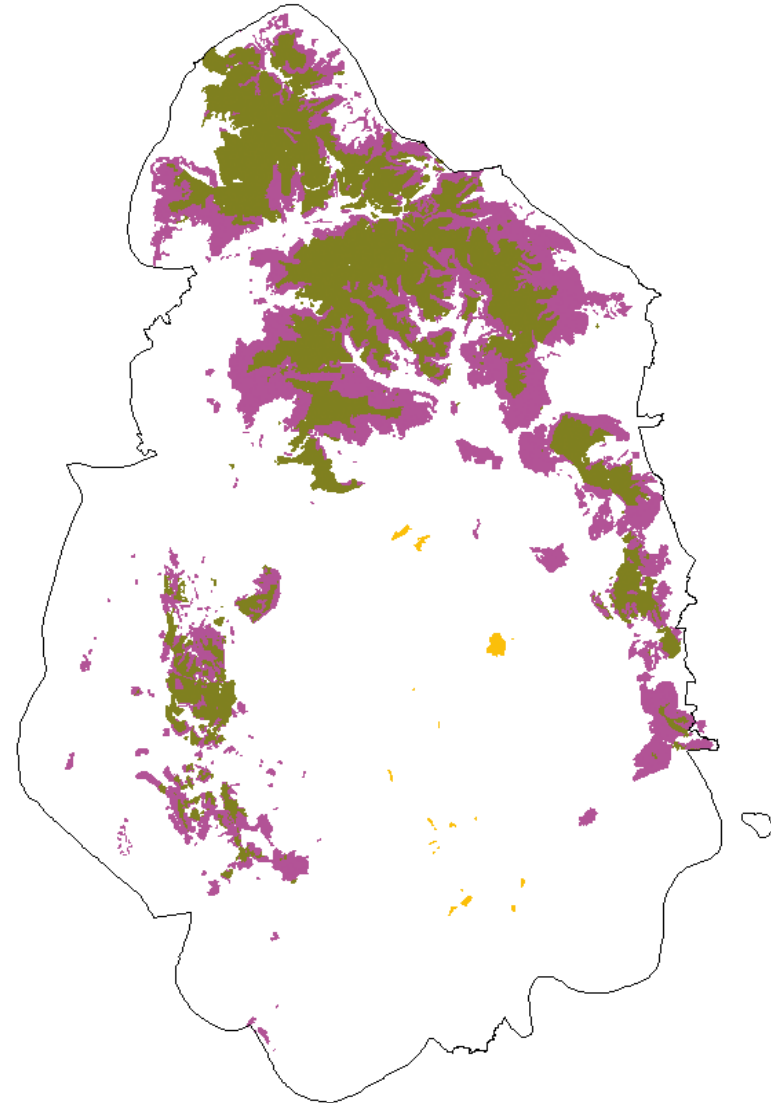


## Extent of moorland

**Limestone Heath**

**Blanket Bog**

**Heather Moorland**



# Heather Moorland



# Blanket Bog



# Upland Oak Woodland





Conifer plantations

## **Sources of funding – Classic national agri environment Schemes**

- Countryside Stewardship Schemes (CSS)
  - Mainly the White Peak
  - Capital works programmes
- Environmentally Sensitive Areas (ESA)
  - North Peak ESA & South West Peak ESA
  - Conservation plans – 2 year programme

## Sources of funding – current national agri environment scheme

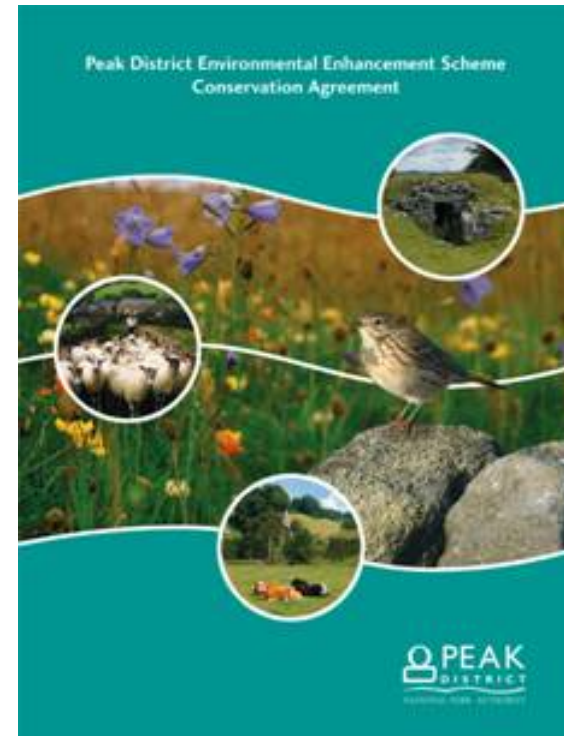
### Environmental Stewardship Scheme

- **Entry Level Scheme (ELS) & Uplands Entry Level (UELS) in severely disadvantaged areas**
- **Higher Level Scheme (HLS) includes conservation plans – 3 years of capital works**



## Sources of funding – PDNPA'S Environmental Enhancement Scheme

- Free conservation advice in the National Park (now through PDLMAS)
- Small grant scheme to plug gaps in national schemes:
  - Grant for conservation projects such as pond restoration, dry stone wall and hedge restoration
  - Annual payments for management of moorland, hay meadows, unimproved pastures
- No capital grants in ELS





## **What can be achieved – landscape and habitats improvements**

- Fencing
- Walling
- Re wetting – drain/grip blocking
- Scrape creation
- Moorland restoration – heather cutting, transporting and spreading brash
- Air lifting of for example heather brash

## **What you can do and how that helps you and the Peak District**

- Knowing what the agri environment funding is for and what it is trying to achieve - £16 million
- Knowing where to look for tender details
- Contractor lists
- The tender process
- The contract process
- Net working & collaboration
- More £'s into local businesses