



**PEAK
DISTRICT
NATIONAL
PARK**

Accessibility Guide for Parsley Hay Cycle Hire

Parsley Hay

near Buxton

Derbyshire SK17 ODG

Tel. & Fax: (01298) 84493



Welcome

Parsley Hay Cycle Hire is located for easy access onto the Tissington and High Peak Trails.

The Cycle Hire Centre and trails are fully accessible for wheelchair users or those with specific access needs. Our specially adapted bikes include hand cranks, tandem trike, trikes, tramper and wheelchair bikes . We can provide a standard bike free of charge, subject to availability for an accompanying person to assist along the trail.

Please contact us if you require any further information about specific access needs or advice on planning your visit. Our dedicated, experienced team of assistants are fully skilled and equipped to help you enjoy your cycle ride and take in the beautiful scenery and location.

At a glance



Level Access

There is level access from the main entrance to the following areas of the Centre and the locality:

- There is level access to the shop, counter and cycle hire which are all open plan. There is a large 3m x 3m map of the trails located at the rear of the centre on the back wall .
- There are open views and picnic tables available for use outside the centre. There is level access to the picnic area from the Cycle Hire Centre, car park and trail.
- The High Peak and Tissington trails can be explored using one of the hire bikes. The access point to the trail is straight opposite the cycle hire entrance and provides level access. The ground changes from concrete to compacted aggregate on the trail.
- The team will advise which direction to go on the trail and there are directional signs along the route.
- You can also plan your route before you arrive at www.peakdistrict.gov.uk/visit/cycle
More information on the trails can be found at: www.peakdistrict.gov.uk/visiting/trails
- There is a unisex accessible toilet adjacent to the cycle hire entrance. The toilets are open at all times and a radar key is not required .



Hearing

A portable hearing loop is available at the main counter - please ask a member of staff.



Visual

Glass doors and full-height windows have contrast markings



General

- We endeavour to ensure that all staff attend disability awareness training.
- Most contracted staff have attended the disability awareness training provided by Accessible Derbyshire

Getting here

Parsley Hay, near Buxton
Derbyshire. SK17 0DG

Parsley Hay Cycle Hire Centre is situated 8 miles south of the spa town of Buxton. The centre is easily reached via the A515 from both Buxton and Ashbourne, Parsley Hay makes the ideal starting point to explore the Peak District. If you are planning your journey by car please use the postcode SK17 0DG.



Travel by public transport

The nearest railway station is at Buxton 9 miles away or 20 minutes by car. Taxis are available from the station. For accessibility information see: www.nationalrail.co.uk/stations/BUX/details.html

Accessible taxis can be pre booked through [A2Z Cars](#)



Parking

There are two 'pay and display' car parks located either side of the cycle hire facility. There are 2 accessible parking bays in each of the 'pay and display' car parks which are 35m from the main cycle hire entrance. There are 75 parking spaces available plus the 4 clearly marked accessible blue badge parking bays.

The car park surface is tarmac with wide level path leading right up to the entrance. There is no street lighting within the car park as the cycle hire facilities are only available during day light hours. There is one car park ticket machine just outside the entrance to the cycle hire building which is 35 metres from the blue badge parking bays. The 'pay and display' machine is at a high level and so staff on duty in the cycle hire centre can also issue parking tickets if required. Parking is free for blue badge holders, please display the badge.



Pathway from the car park
to the centre

Arrival

Main entrance:

- There is level access along the path to the centre and within the main entrance.
- The floor surface within the centre is concrete.
- Entry to the centre is via a standard accessible push button located to the right of the automatic door. There is a sliding automatic door which opens to 1000mm / 39.5ins. The cycle hire counter and information desk is located immediately to the left of the entrance.



Level surface around the centre



The main entrance door leading to the counter and retail area

Getting around inside

Visual impairment - General information

- There are contrast markings on all glass doors, on all full height windows and high colour contrast between walls and doorframes
- Some parts of the venue have low lighting

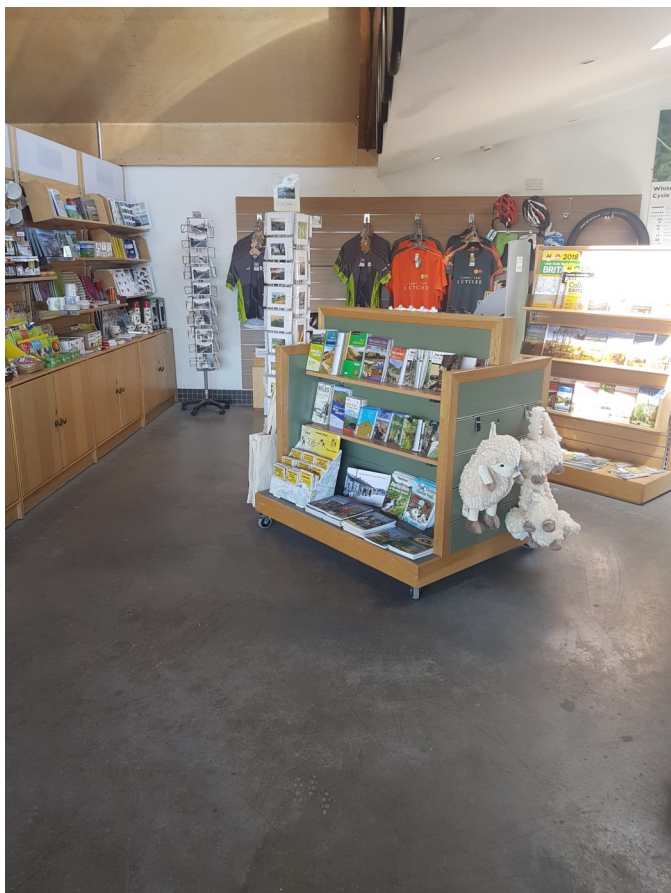
The Counter and Information Desk

- The area is lit by natural light and supplemented on dull days with fluorescent lighting. The counter is 920mm / 36inches in height.
- There is one bench without arms in this area.
- There is a hearing loop system installed at the counter and a sign saying hearing hoop on the automatic entrance door. There is also a magnifying glass, large print leaflet and pen and paper available.
- From the main entrance to cycle hire/the shop, there is level access. Once payment has been taken at the till area, customers are asked to go back outside to the entrance of the cycle store area where a member of the team will take their chosen cycle to you.



Main counter to the left of the main door.

Getting around inside.



Retail area in front of the main door and to the right of the counter



Looking through the main door in to the centre

Public toilets

Public toilets are located 10 meters from the cycle hire entrance at the far end of the cycle hire building. Access is from outside only and there is level access.

- There is a unisex accessible toilet adjacent to the cycle hire entrance. The toilets are open at all times. A radar key is not required. The accessible toilet door entrance is 910mm / 36 inches wide.
- There is a 1000mm/39.5 inches transfer space for a wheelchair to the right of the WC when facing it. The height of the WC is 480mm / 39.5 inches.
- There are 3 grab rails one horizontal, one vertical on the left (when facing the WC). Another rail is situated on the right; this can be lowered into a horizontal position when needed.
- The accessible toilet is fitted with a fire alarm and a flashing light. Users can alert the cycle hire team if they require assistance by pulling the red cord.
- The accessible toilet facility is well lit with fluorescent lighting. The floor surface is smooth level concrete. The taps on the sink are operated by levers.



Parsley Hay Cycle Hire Centre



Outdoor seating and views from the centre



Looking over the trail and views from the centre

Place to eat

There is a small privately operated refreshment kiosk located a level 10 metres from the cycle hire entrance.

There is uncovered bench seating available adjacent to the trail with level access.

Customer Care

Customer care support

Accessibility Equipment:

- A hearing loop is installed at the counter
- Assistance dogs are welcome and water bowls can be provided for them. Please ask staff for assistance.

Emergency evacuation procedures:

In the case of evacuation, all customers inside the centre will be led to safety by a member of the team or by a member of the fire brigade.

Customer care support:

- We endeavour to ensure that all staff receive disability awareness training
- We are able to print off information in large print.