

1951-2021



**PEAK
DISTRICT
NATIONAL
PARK**





Town/ Village ¹⁶⁹	Convenience food shop	Post Office	Primary school	Community Hall	Playground (PG) and playing field (PF)	Industrial units	Distance to GP (miles)	Reasonable road width & within 1 mile of A or B road	Good public Transport service	Public House	Post box	Church	Potential to develop without harm to valued characteristics of settlement and its landscape setting
Alstonefield	x	✓	x	✓	✓	x	3.2	✓	x	✓	✓	✓	Little potential other than very limited affordable housing for parish and adjoining parishes
Ashford	✓	✓	✓	✓	✓	x	1.5	✓	✓	✓	✓	✓	Little potential other than very limited affordable housing for parish and adjoining parishes
Bakewell	✓	✓	✓	✓	✓	✓	0	✓	✓	✓	✓	✓	Some potential for housing schemes identified by site search with Town Council and Rural Housing Enabler late 2009 following need survey in Autumn 2009.
Bamford	✓	✓	✓	✓	✓	✓	2.2	✓	✓	✓	✓	✓	Little potential other than very limited affordable housing for parish and adjoining parishes
Baslow and Bubnell	✓	✓	✓	✓	✓	x	0	✓	✓	✓	✓	✓	Little potential other than very limited affordable housing for parish and adjoining parishes
Beeley	x	✓	x	✓	x	x	2.9	✓	x	✓	✓	✓	Little potential other than very limited affordable housing for parish and adjoining parishes
Biggin	x	✓	✓	✓	✓	x	0.8	✓	x	✓	✓	✓	Little potential other than very limited affordable housing for parish and

Shops and community facilities recorded in 2010 in 63 of the Peak District's main settlements

Amenity	2010 (number)
Convenience shop	34
Post Office (inc visiting)	33
Primary School	43
Community Hall	50
Playground/Playing field	42
Industrial units	15
Distance to nearest GP	1.5 miles (av)
Within 1 mile of A or B road	62
Good public transport service	44
Public House	54
Post box	63
Church	60



Shops and community facilities recorded in 2019 in 89 of the Peak District's parishes.

Amenity	2020 (number)
Convenience shop	28
Post Office (inc visiting)	28
Primary School	39
Community Hall	54
Playground/Playing field	48
Industrial units	18
Distance to nearest GP	1.8 miles (av)
Within 1 mile of A or B road	62
Good public transport service	45
Public House	54
Post box	63
Church	60

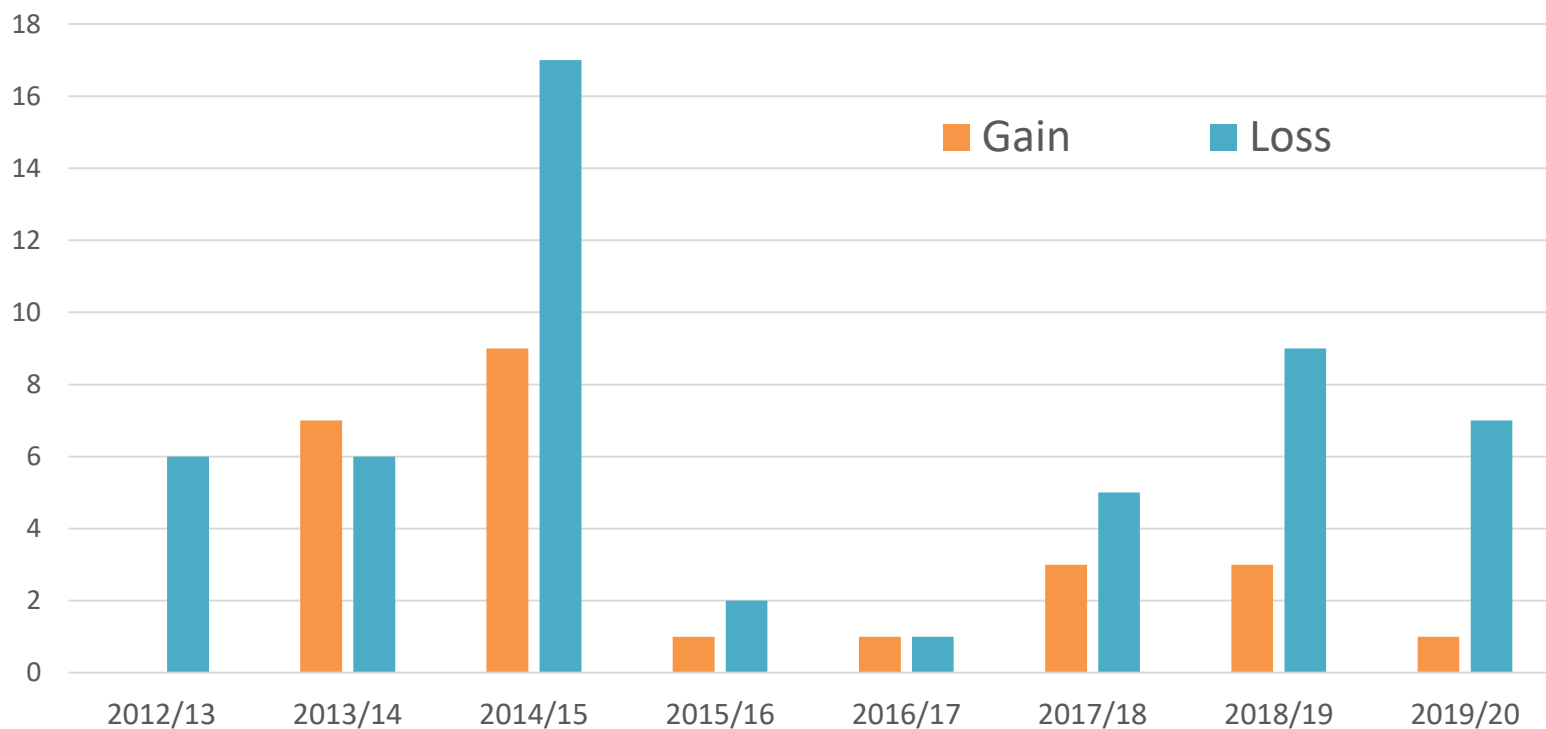




Annual Monitoring Reports (2012-2016) and planning data (2017-2019)

Data has been used to assess the overall trend in relation to the provision and retention of community facilities*

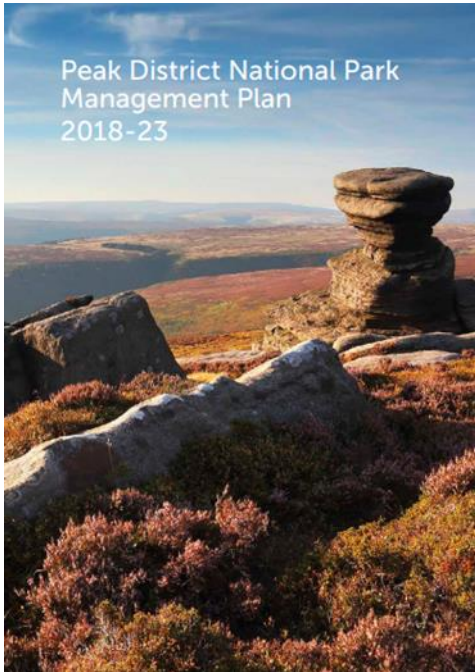
*shops, cafes, pubs, take-aways, hotels, clinics, health centres, nurseries, schools, education/training centres. Places of worship, dance halls, gyms, community hall, swimming baths, offices, industrial units



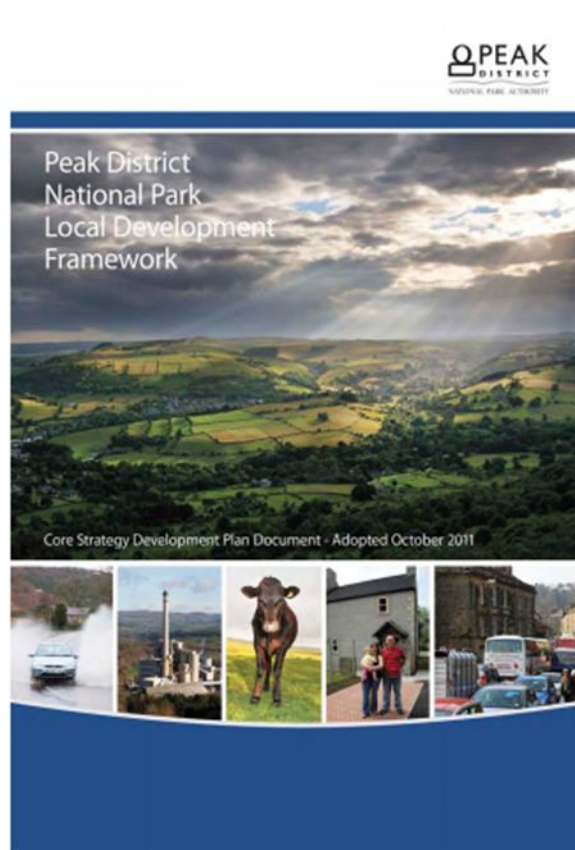
1951-2021



**PEAK
DISTRICT
NATIONAL
PARK**

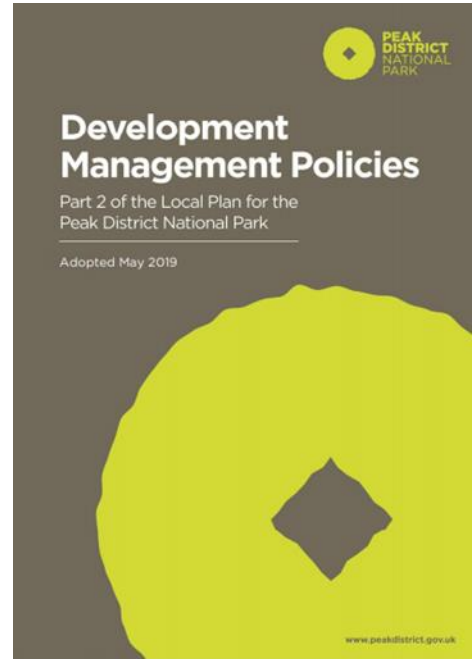


Peak District National Park
Management Plan
2018-23



Peak District
National Park
Local Development
Framework

Core Strategy Development Plan Document - Adopted October 2011



**Development
Management Policies**

Part 2 of the Local Plan for the
Peak District National Park

Adopted May 2019

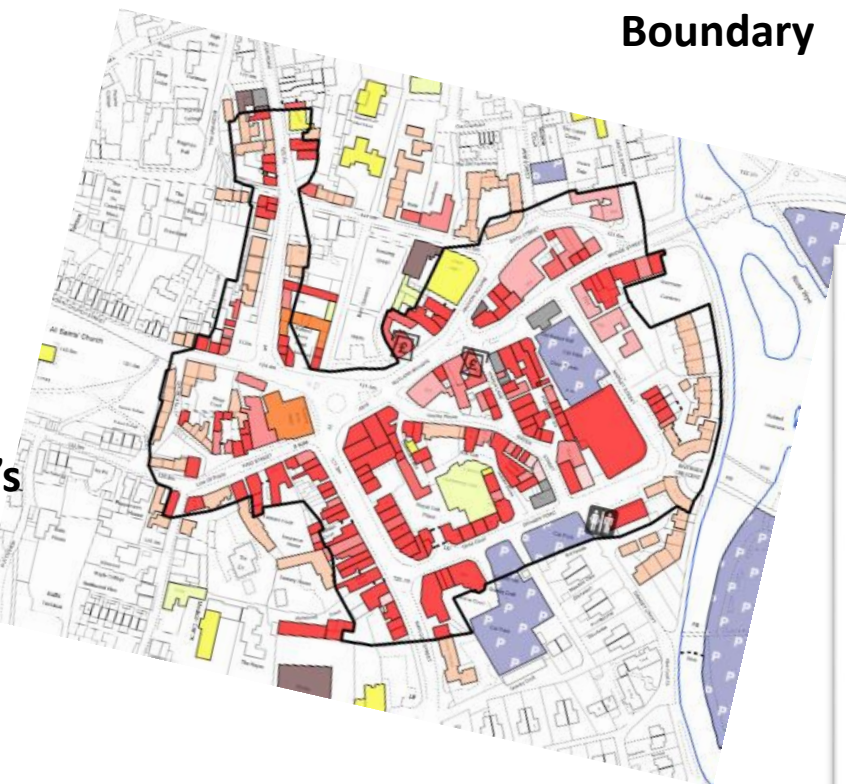
www.peakdistrict.gov.uk



Current situation

**DS1
HC4
HC5**

**Bakewell's
Central
Shopping
Area**



**Bakewell's
Development
Boundary**



**Safeguarded
recreation sites &
sport facilities**



For reference, detailed designations can be viewed here
<https://arcg.is/P8GmW>



‘ . . . the loss or change of use of existing public services, including health facilities, will be acceptable if it is shown that this forms part of a wider estate reorganisation . . . ’



Proposals for non-A1 retail uses within the Primary Shopping Area will normally be allowed provided that the proportion of A1 retail length along that shopping frontage does not fall below 70%. Where this proportion is already below 70% proposals for non-A1 uses will normally be resisted.

BAKEWELL NEIGHBOURHOOD PLAN

Submission Version

Regulation 15

2020-2035





New Issues and Drivers for Change

National changes to Use Classes from 1st September 2020

The below now fall under a new Use Class E

Class A1 (shops – with the exception of*)

Class A2 (Financial and professional services)

Class A3 Café or restaurant

Class B1 (business)

Class D1 (clinics, health centres, nurseries, schools, training centres, museums, libraries, public halls, places of worship, law courts)

Class D2 (gyms, indoor recreation)

The below now fall under a new Use Class F2

Shops*

Hall or meeting place for the principal use of community

Indoor or outdoor swimming baths, skating rinks and outdoor sports

The below now fall under the Sui Generis category

Class A4 pub or drinking establishment

Class A5 Take-away

Class D2 Cinemas, concert/bingo/dance halls

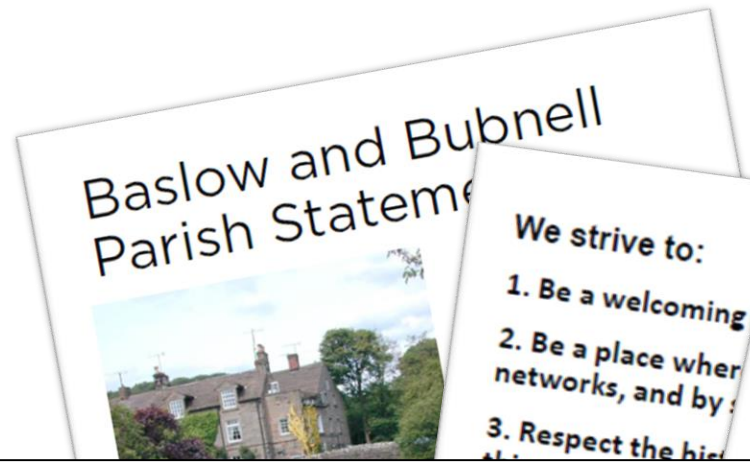
* Shops that are 280sqm mostly selling essential goods, including food and at least 1km from another similar shop



THRIVING AND SUSTAINABLE COMMUNITIES

Parish Statements

- Put together since 2019
- Involved a land use survey
- Consultation with each parish
- Use of statistical data



Settlement Amenities

Convenience Food Shop	★
Post Office	★
Primary School	—
Community Hall	★
Playground	★
Playing Field	★
Industrial Units	★
Distance to General Practice (miles)	1.5
Within 1 Mile of an A or B Road	★
Good Public Transport Route (5+ services a day)	★
Public House	★
Post Box	★
Church	★
Mobile Library	★
Conservation Area	★
Website/Newsletter	★
Groups	★
Events/Traditions	★
Accommodation	★

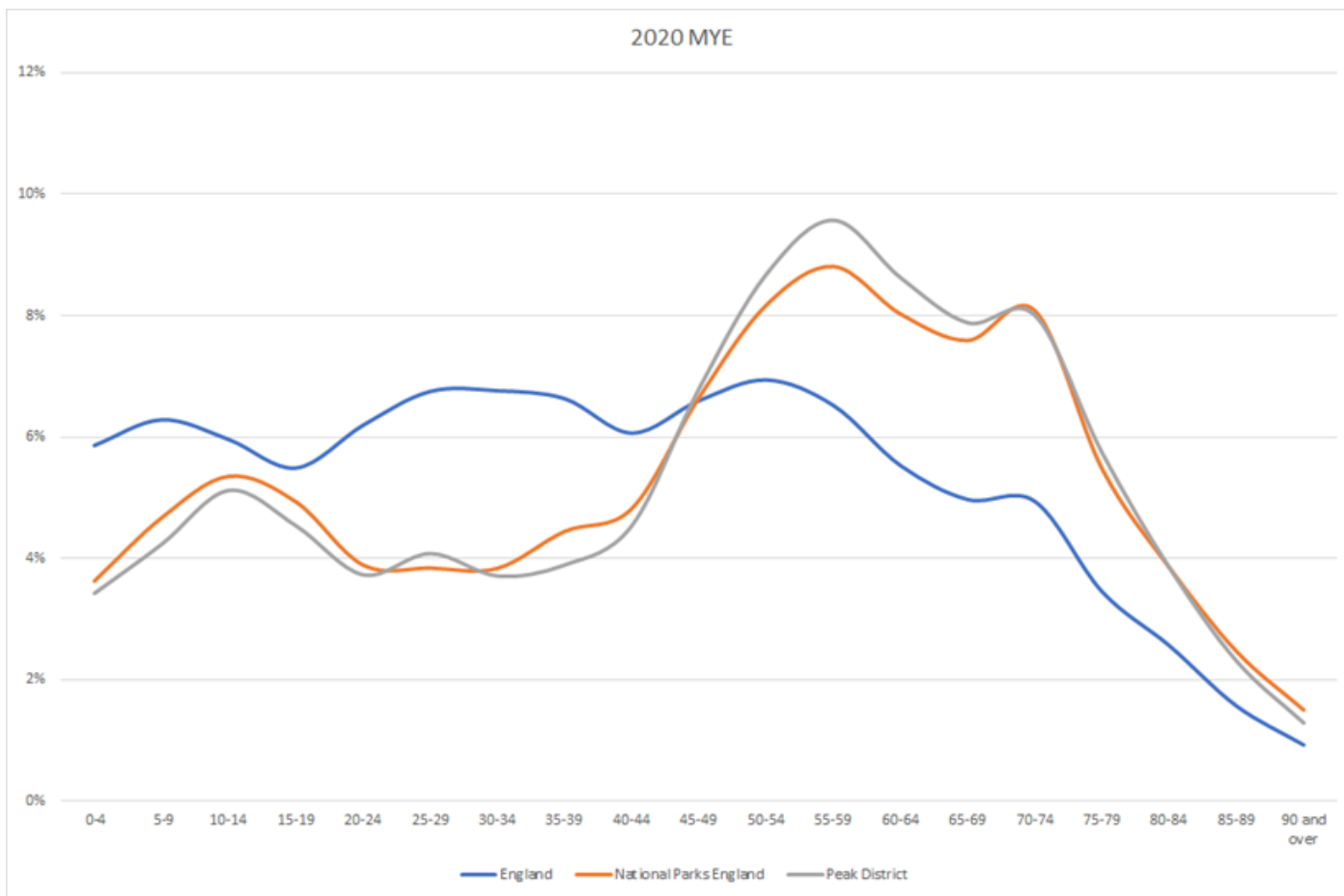
Key
 ★ Is present
 — Is not present

ated abo...
 packs and...
 high and...
 The grea...
 was a pr...
 it would...



Population levels

Survey	Population
1991 Census	38,100
2001 Census	37,937
2011 Census	37,905
2016 MYE	37,070
2020 MYE	36,940



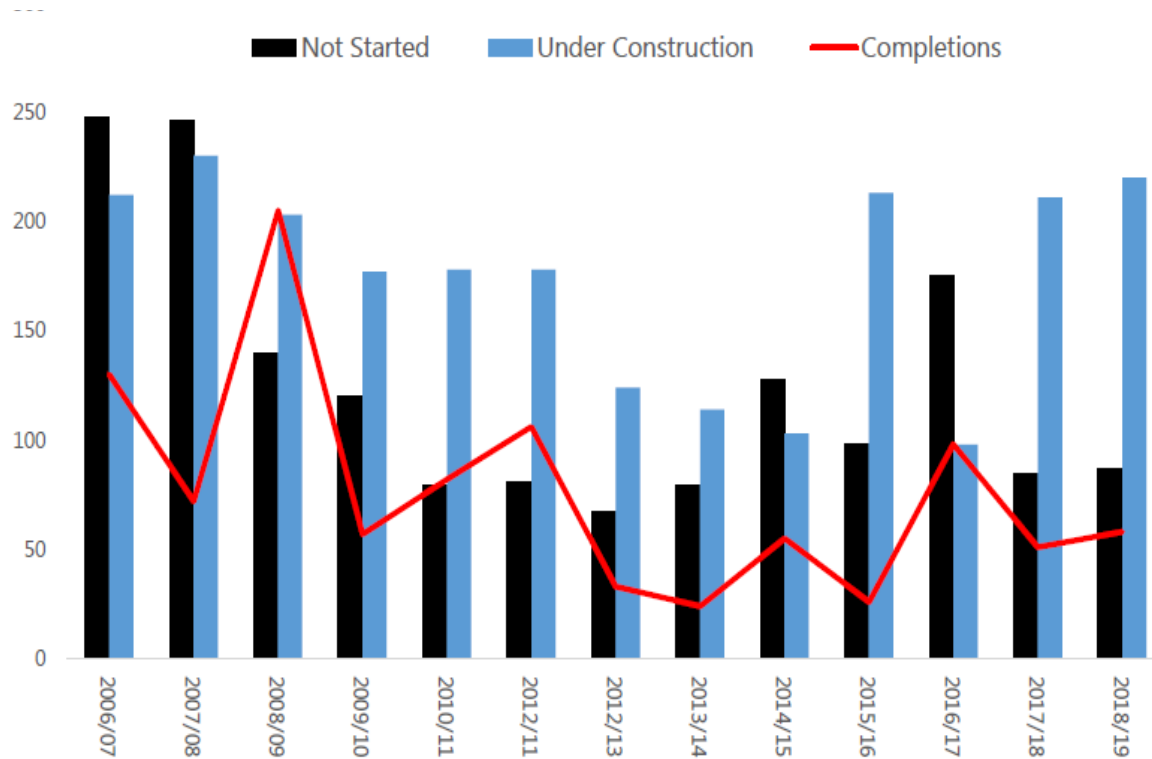


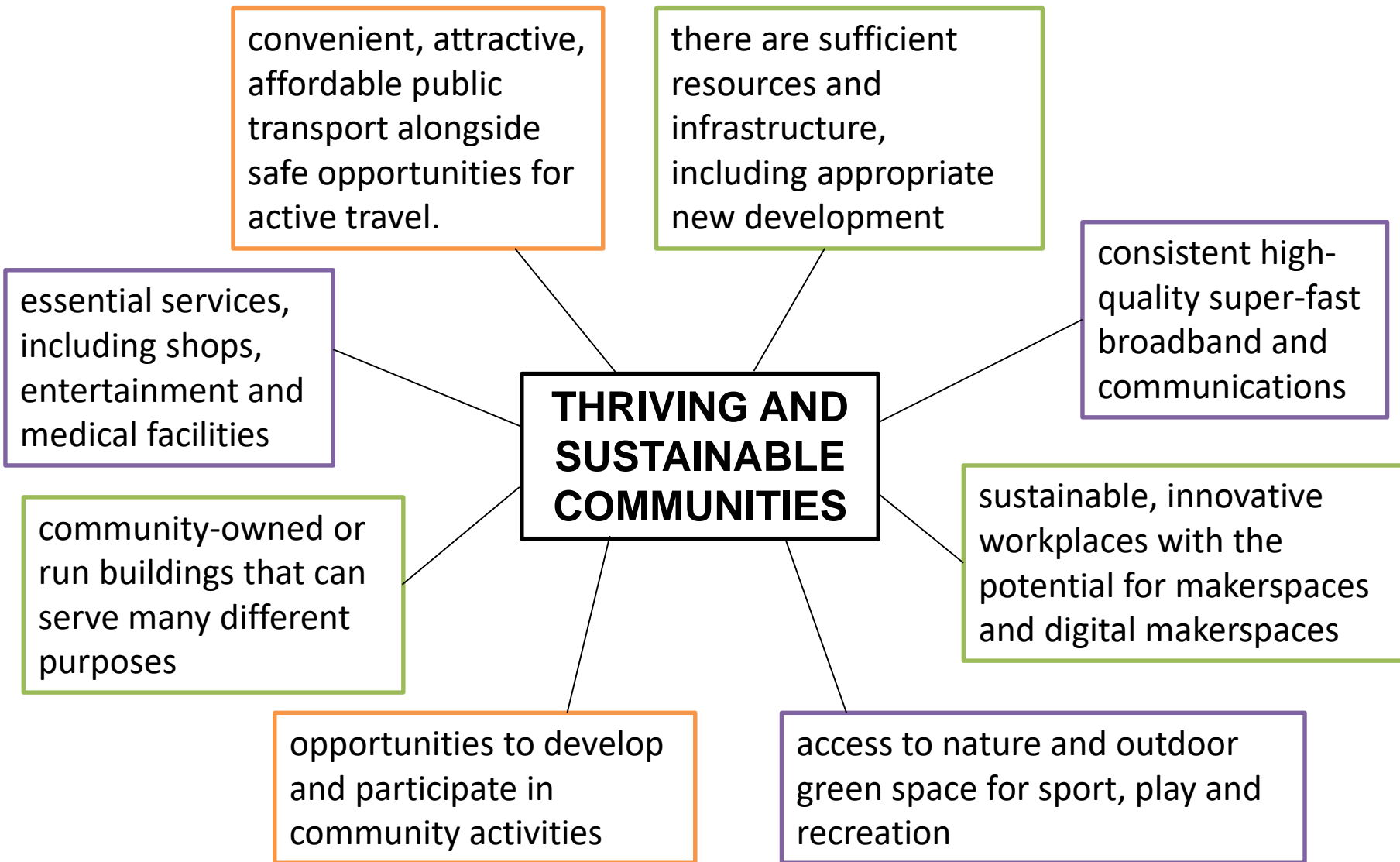
- Since 2010, the Peak District National Park has experienced a decline in its population, driven by reduced net migration and an ageing population profile
- Population ageing (an increasing imbalance in favour of older-age population) is a challenge that rural areas and National Park planning authorities in England and Wales are facing, and is a key consideration for future housing growth plans
- To **maintain** the National Park's population at its current level, it is estimated that **61** homes would be required each year, all of which would be associated with an average annual net in-migration flow of +190 per year
- A population **increase** in the Peak District is only achieved on the higher dwelling led growth targets of the model (**+95** to **+150** per year) during the life of the plan period



Indicative housing delivery figures 2006 – 2026

	Upper estimate
White Peak & Derwent Valley	1015
South West Peak	160
Dark Peak & Eastern Moors	110
Total	1285





New Issues and Drivers for Change

COVID-19 has raised many questions....

“With the reliance on home working have there been areas that have found this difficult due to their broadband connection?”

“How has COVID impacted on our shops and facilities?”

“Has COVID placed an increased importance on **outside** spaces where social interaction can take place?.”

“Has COVID increased the desire to be self-sufficient, therefore creating more demand for certain services and allotments etc?.”

“Has COVID changed the way communities want to shop?”





Local Plan Review Informal Online Survey Winter 2020

“In order to achieve sustainable and thriving communities with easy access to services, we believe shops and community facilities should be located within existing settlements and their loss resisted. Do you agree?”

93% Agreed or Strongly Agreed



Local Plan Review Informal Online Survey Winter 2020

“Our communities are surrounded by the National Park landscape. However, greenspaces within settlements offer different benefits including as a place to meet, for children’s play, natural areas for biodiversity, allotments and tree planting. All National Park communities should have easy or convenient access to greenspaces like these. Do you agree?”

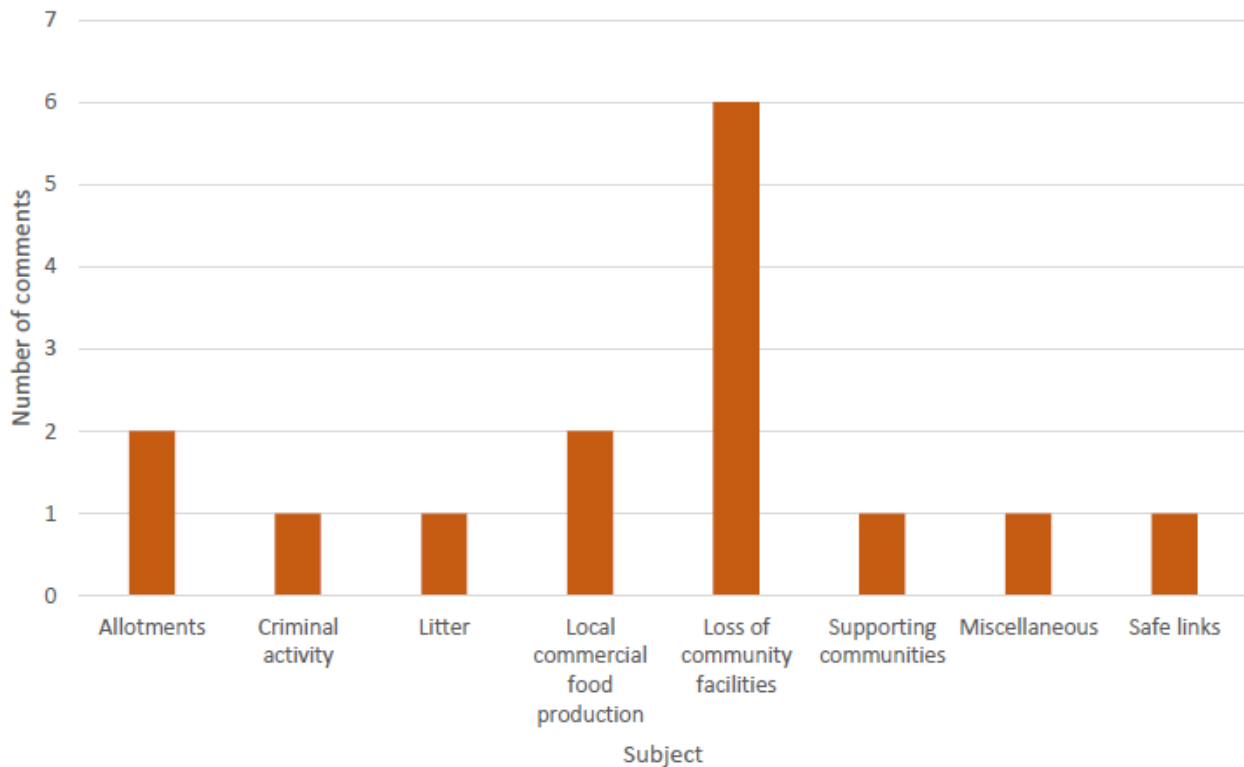
92% Agreed or Strongly Agreed



Local Plan Review Informal Online Survey Winter 2020

With regards to the open question in this survey the following was noted on those comments relating to communities:

Shops and Community Facilities - Comments by Subject



“Support local pubs. They are a special part of the Peak District economy.”



“Very sad that villages have lost retail facilities like post offices and shops.”

1951-2021



**PEAK
DISTRICT
NATIONAL
PARK**



The **Grindleford**
Community Shop

