



Connecting Peak District Communities

Events ran during December 2012 to March 2013





Welcome and Introduction

Board Member of Business Peak District

What is High Speed Broadband?

- “Superfast” defined as 24/30Mbps or better.
 - What on earth?
- Currently typically 0.5-1.0Mbps – **IF** you can get it
- Speed isn't everything
 - What are you doing online?
 - Who are you competing with while online?
- Home network
- Equipment
- Type of connection
 - Phone line; line of sight radio; satellite



What is Superfast Broadband?

- “Superfast” defined as 24/30Mbps or better.
 - What on earth?
- Currently typically 0.5-1.0Mbps – **IF** you can get it
- Speed isn't everything
 - What are you doing online?
 - Who are you competing with while online?
- Home network
- Equipment
- Type of connection
 - Phone line; line of sight radio; satellite



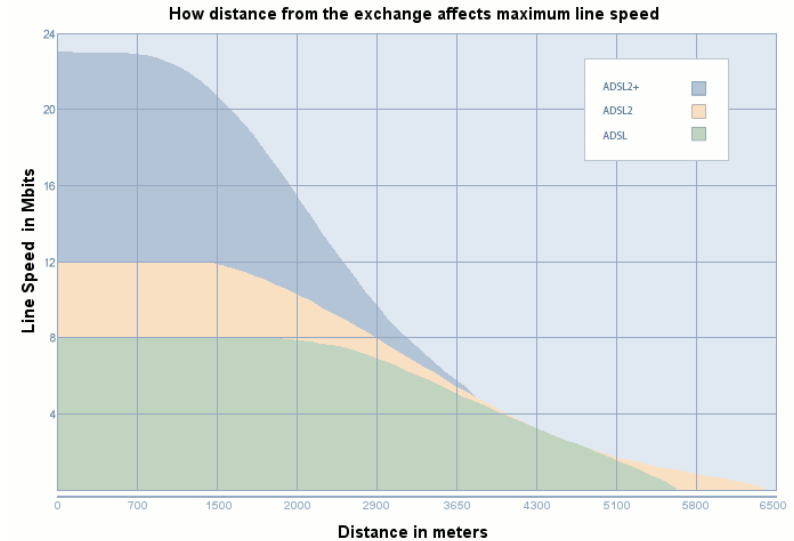
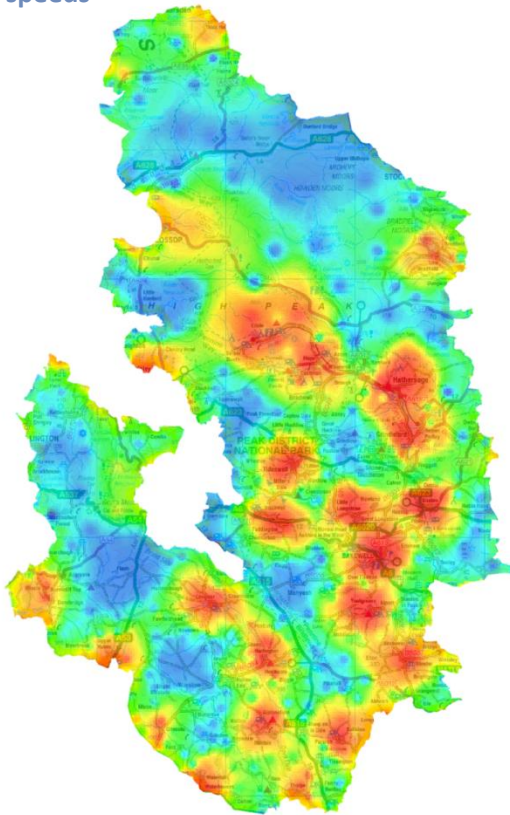
What is Superfast Broadband?

- Peak District Context

Theoretical connection speeds

Red 6-8Mbps
Yellow 4-6Mbps
Green 2-4Mbps
Blue 0-2Mbps

July 2012



Source http://www.broadbandspeedchecker.co.uk/guides/adsl_and_distance.aspx

Context

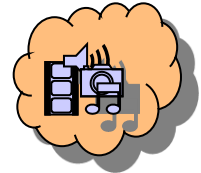
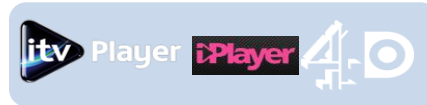
- $\frac{1}{3}$ of properties in National Park > 4.5km from exchange
- $\frac{1}{5}$ of properties receive under 1Mbps
- Large areas likely to be only 2Mbps by 2015
- Fast broadband top priority to enable businesses to remain competitive and to stimulate rural economic growth, hence thriving communities



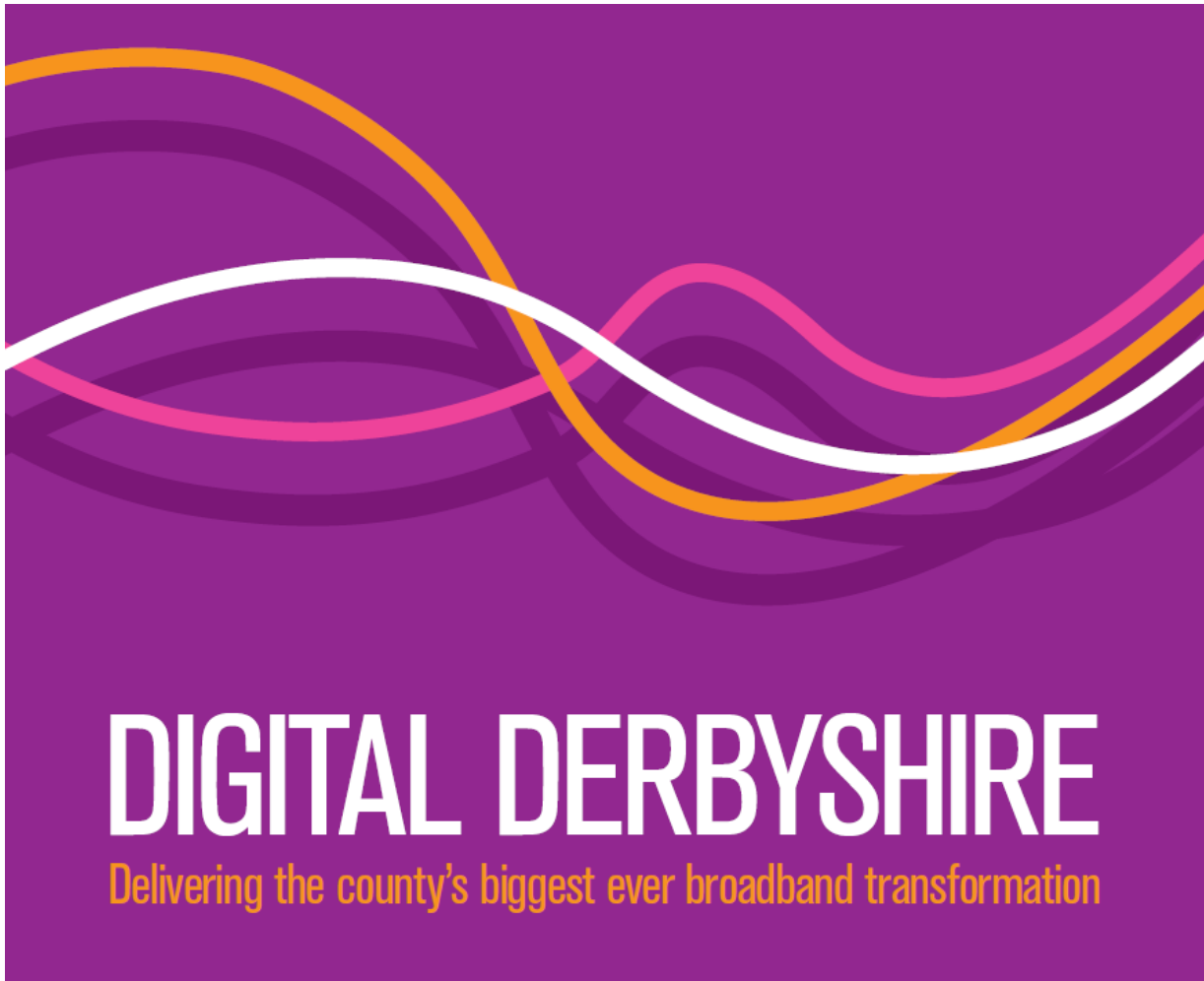
What is Superfast Broadband?

- What can you do with it?

- Entertainment – TV; games
- Back up online – photos; music ...
- Education – live lectures; keep up with schoolwork
- Business and work
 - video calls; online returns; connect to customers;
 - run the business “online”
 - collaborate
- Community
 - do more things more quickly
 - make villages attractive for newcomers and businesses
 - Schoolwork – in school!
- Healthcare – online consultations



What's happening with Broadband in Derbyshire?



Registration Tool responses

District	Homes	Businesses	Total
Amber Valley	366	61	427
Bolsover	110	4	114
Chesterfield	176	9	185
Derbyshire Dales	718	117	835
Erewash	210	8	218
High Peak	466	83	549
North East Derbyshire	254	22	276
South Derbyshire	331	35	366
Derby City	27	8	35
Other	20	4	23
Total	2678	350	3028

Data as at 16th January 2013



Workshops



- What does Broadband mean for my community?
- What does Broadband mean for my Business?



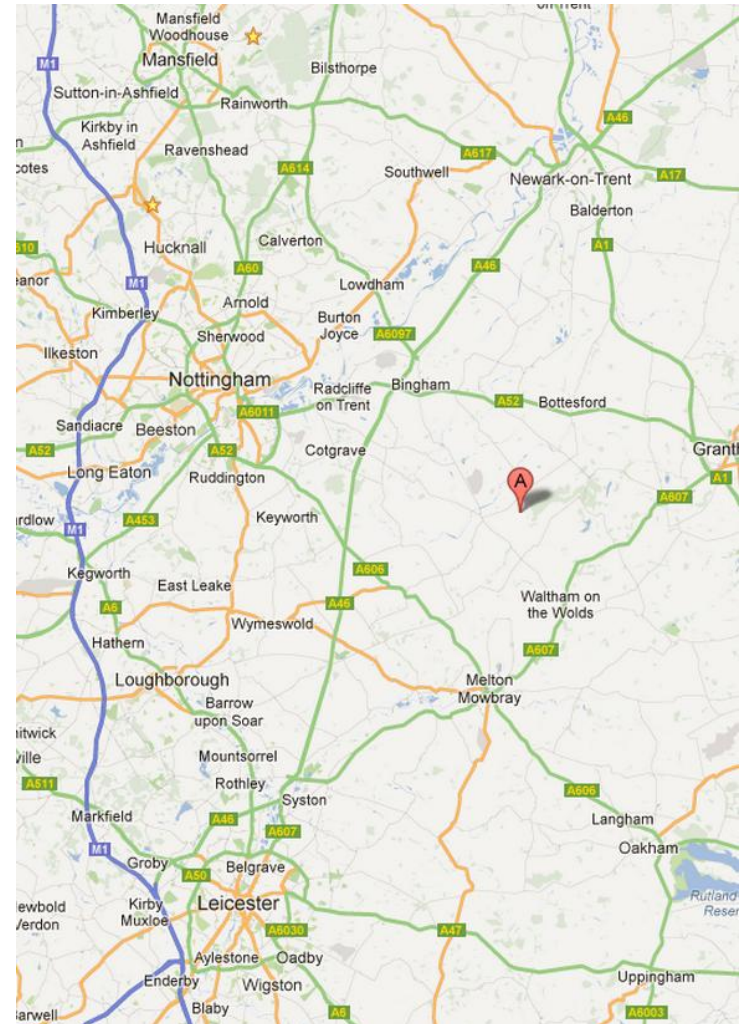
Case Studies & Local Experiences

- Sue Prince – Issues faced by rural & farming businesses in the Ashbourne area
- Chris Woodhouse - Solutions in other rural areas



Stathern

- Three villages in Vale of Belvoir
- Community Interest Company
- Technical issues resolved ✓
- Business case sound ✓
- Planning permission ✓
- C. of E. “Faculty” 🏠
- No State Aid ✘
 - Capital costs too high for small scheme / supplier
- Hereford Diocese and Norwich Diocese 😊
- www.wispire.co.uk



Rainow



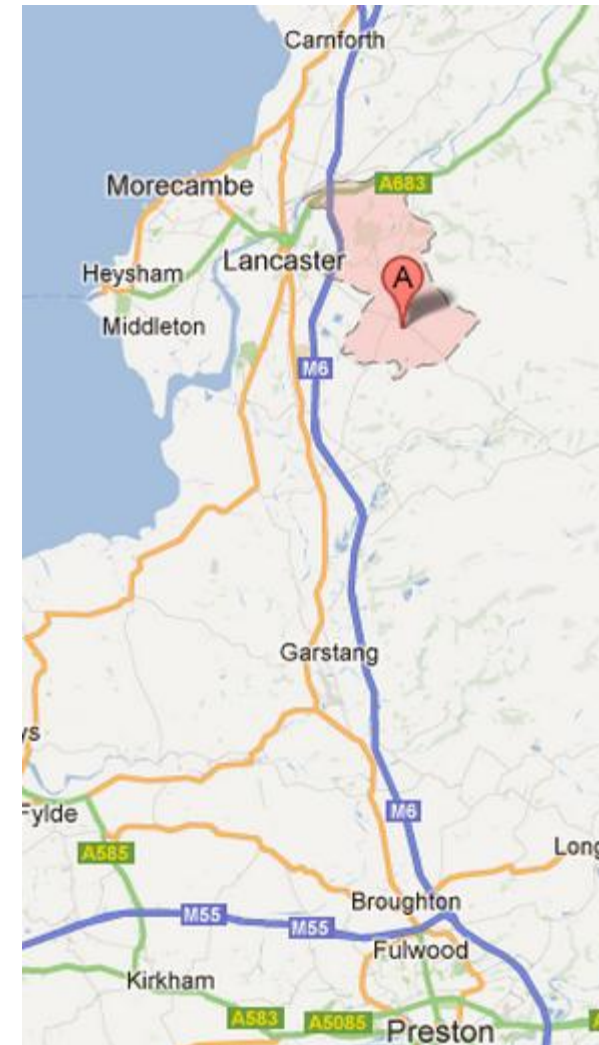
- Mixed messages from BT about “Infinity”
- 2-year campaign
- Needed to demonstrate demand ✨
- VIPs – MP; Councils; BT
- Order of magnitude increase in speed
- Consistent and reliable
- www.connectingcheshire.org.uk



B4RN



- 1Gbps symmetric (upload=download)
- £150 connection; £30/month
- Self-financing
- Not for profit company offering shares
- Landowners dig trenches for shares
- Members “blow” and splice fibre – proper training
- Community consultation and engagement hard to start with – dull subject! ✨
- Commercial wholesale rate for Internet
- Featured on BBC One Show
- www.b4rn.org.uk



Becoming a Broadband Champion

- what's involved?



- spread the word about the Digital Derbyshire programme in their towns and villages



- help gather information about broadband speeds

- highlight demand for better broadband in their community and/or from businesses



- help residents and businesses understand how they can benefit from superfast broadband



Becoming a Broadband Champion - find out more...

The screenshot shows the Digital Derbyshire website. The left-hand navigation menu includes the following items: Business and economy, Digital Derbyshire, What is Digital Derbyshire, Speed checker, Super-fast broadband, Broadband survey, Rural Community Broadband Fund, **Broadband champions** (highlighted with a red circle), Register my business, Register my home, Opportunities, and Information pack. The main content area features a 'Digital Derbyshire' section with a sub-heading 'Digital Derbyshire needs you!' and text stating that the programme is investing at least £15 million in Derbyshire's biggest ever upgrade of broadband speeds. It also includes a 'Help us drive Digital Derbyshire' section and a 'Say yes!' call to action. On the right, there are buttons for 'Register a home' and 'Register a business', along with statistics: 2513 people have pledged their support, 2238 homes, and 274 businesses.

derbyshire.gov.uk/digitalderbyshire

The screenshot shows the Derbyshire County Council website header. It features the council's logo and name, a search bar with the text 'I'm looking for...', and a navigation menu with the following items: Business and economy (selected), Community and living, Education and learning, Environment, Leisure and culture, Social care and health, Transport and roads, Working for us, and Your council.

Business and economy

Digital Derbyshire

Broadband champions

Contact a broadband champion

Become a champion

Meeting dates

Broadband champions - a voice for your community

There is currently a huge variation in the level of broadband availability and speeds across Derbyshire.

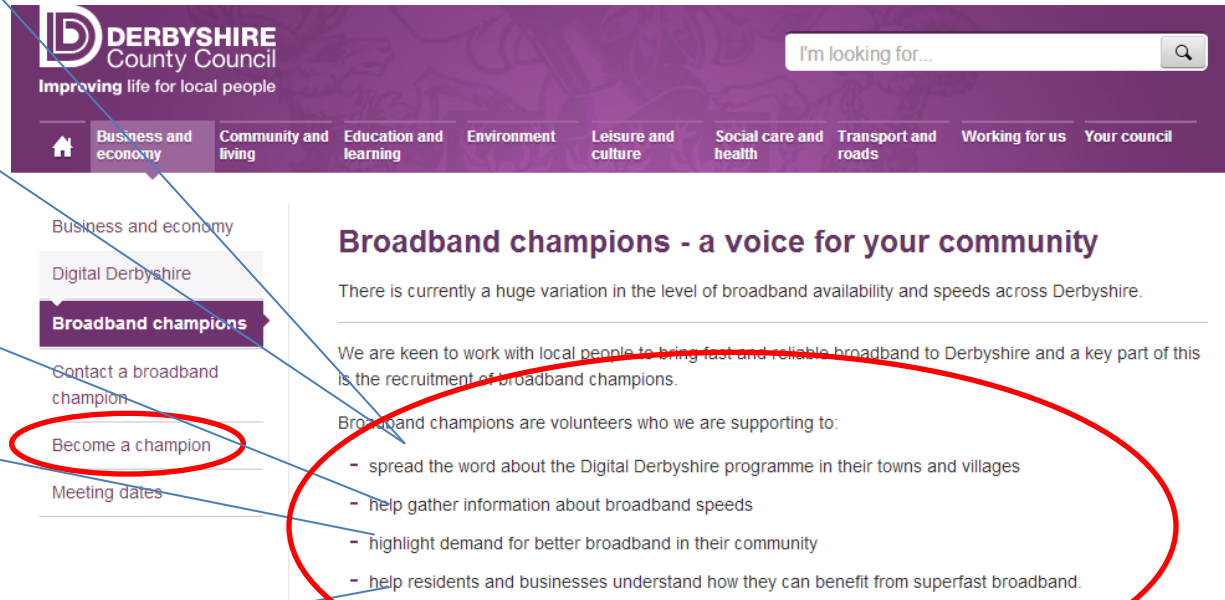
We are keen to work with local people to bring fast and reliable broadband to Derbyshire and a key part of this is the recruitment of broadband champions.

Broadband champions are volunteers who we are supporting to:

- spread the word about the Digital Derbyshire programme in their towns and villages
- help gather information about broadband speeds
- highlight demand for better broadband in their community
- help residents and businesses understand how they can benefit from superfast broadband.

Becoming a Broadband Champion

- how do I volunteer?



DERBYSHIRE
County Council
Improving life for local people

I'm looking for...

[Business and economy](#) [Community and living](#) [Education and learning](#) [Environment](#) [Leisure and culture](#) [Social care and health](#) [Transport and roads](#) [Working for us](#) [Your council](#)

Business and economy
Digital Derbyshire
Broadband champions
Contact a broadband champion
Become a champion
Meeting dates

Broadband champions - a voice for your community

There is currently a huge variation in the level of broadband availability and speeds across Derbyshire.

We are keen to work with local people to bring fast and reliable broadband to Derbyshire and a key part of this is the recruitment of broadband champions.

Broadband champions are volunteers who we are supporting to:

- spread the word about the Digital Derbyshire programme in their towns and villages
- help gather information about broadband speeds
- highlight demand for better broadband in their community
- help residents and businesses understand how they can benefit from superfast broadband.



Panel – Question time

Please remember to fill out your registration and evaluation forms!